

## Quick tour of the Henry Madden Library

This self-guided tour will orient you to the Library building and acquaint you with some of its major collections and services. The tour will only take about **30 minutes**, but we hope it will give you enough experience to make you feel comfortable in this wonderful resource. Please, feel free to pause along the way, explore and **ask questions of any of the Library staff**.

### Did you know?

The Library has over 8 acres of floor space and is the largest California State University Library in the Central Valley.

Funding for the \$95 million Library was made possible by an 2004 education bond (Proposition 55).

There are over 3 million tons of steel in this building.

Once completed, the HML will have seating for 3,500 students and visitors.



### Directory

3S	Arne Nixon Center
1N	Circulation
3S	Dean's Office
2N	Ellipsis
LL	General Collection
LL	Laptop Lending
1N	Maps & Gov't Info
3N	Music & Media
2N	Periodicals
1N	Reference
4S	Special Collections
2N	Starbucks
2N	Studio 2
3N	Teacher Resource Center

### First Floor (North)

**ENTRANCE.** Inside the foyer, a basket motif surrounds the walls and covers the ceiling in accents of wood tones common to the region. The floor, which is the same natural stone as that on the outside, is polished and laid out in a stairstep pattern. You may notice variations of this pattern in other structures and fabrics throughout the tour.

**To the left is the CIRCULATION DESK.** The Library has well over a million items, and with your campus ID or Community Borrower's card, most of these items are available for home use. Here at the Circulation Desk, you can pick up, check out and return books, pay late charges and inquire about your library account. Loan periods are usually 28 days, but can vary depending on the item. Materials **On Reserve** for specific classes, and some high demand books are located here.

**Straight ahead is the REFERENCE DESK,** the most important service point in the Library! Here, librarians and assistants help people *identify, find, evaluate* and *use* information in person, via phone, email, instant messaging and texting. Public computers next to the Reference Desk offer access to the Library catalog, Internet, and **over a hundred databases**, dozens of electronic resources and tens of thousands of journals. The print reference collection, numbering **over 30,000** volumes, includes general and specialized encyclopedias, dictionaries, indexes, bibliographies, and directories for student, staff and faculty research. Most of these materials can be checked out. Most importantly, however, the Reference Department is staffed with caring, friendly and knowledgeable people to guide you through the research process.

**Toward the rear** of the floor is the **MAPS & GOVERNMENT INFORMATION** Department. The Madden Library receives publications from agencies such as the U.S. Department of State, the California Geological Surveys, U.S. Congress, and the California legislature. The collection (**over 30,000 publications**) covers a broad spectrum of interests, such as water, education, public policy, agriculture, and crime. ~ Complementing these documents are **over 150,000 maps**, atlases, gazetteers, and aerial photographs of Fresno County dating back to 1937! To provide the best use, maps and aerial photographs are in a closed area. Ask anyone on the staff for assistance.

*Return to the ENTRANCE and take the grand staircase or elevators down to the LOWER LEVEL.*

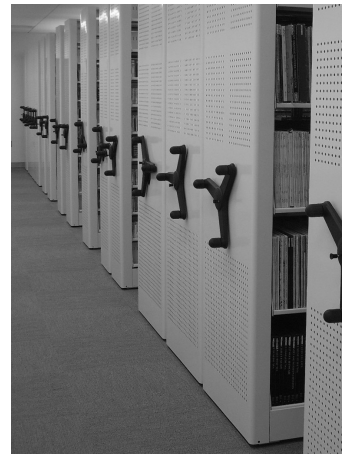
### Lower Level (North)

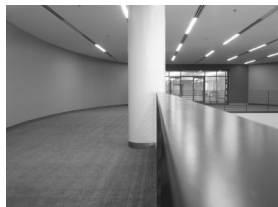
The lower level contains the **books in the general collection.** Here, in compact shelving is the largest single collection of materials in the entire library. Ranges of shelves, nearly 40 feet long, ride on carriages, allowing easy access to **nearly a million** books. Sensors and other security devices assure smooth operation when browsing or selecting books. ~ Like most academic libraries throughout the world the Henry Madden Library uses the same classification as the Library of Congress and the catalog listing all of our materials is online through the Library's website.

Also, on the Collection Level, the Library has a **Laptop Lending** area for students who would like to borrow a computer for a few hours. The Collection Level also has several printers/photocopiers and a PHIL station to add money to your campus ID card.

**BTW.** If you are short on cash, you can **scan** documents on the copiers and then email the files.

*Take the grand staircase or elevator up to the 2nd FLOOR.*





## Did you know?

On the outside, hundreds of precast concrete panels imprinted with abstract patterns represent aerial views of the valley's agricultural lands.

Indigenous plants, trees and grasses, along with locally quarried granite, lead to a 5 story elliptical tower of steel, glass and angled lattice forming part of a basket design.

This building is named after Henry Madden, librarian from 1949 to 1979; the original building occupied this spot until razed in 2006.

Joining the Friends of the Madden Library entitles you to borrowing privileges.

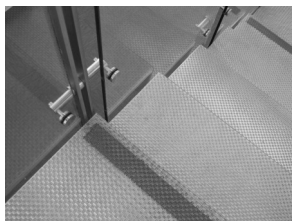
## Summer Hours

Mon – Fri 7:45 am – 5 pm

Sat – Sun Closed

## Group Tours

If your group or organization would like a guided tour of the Library, please call Ross T. LaBaugh at 278-2230, or email [rossl@csufresno.edu](mailto:rossl@csufresno.edu)



## Second Floor (North)

**Periodicals.** Here on the second floor is one of the largest collections, periodicals. The Madden Library subscribes to well over **3,000 journals** (in print) and provides online access to more than twenty times that number! In addition to the current print collection, the Library's retrospective periodicals are bound or on microfilm. ~ With so many possibilities, finding the exact article, issue or volume you need can be a bit tricky. Always ask one of the Library staff here or at the Reference Desk for assistance.

**Ellipse.** Directly above the foyer on the first floor, is the Ellipse, a

## Third Floor (North)

On the third floor take note of the Table Mountain Rancheria Reading Room, and video mural of basket weaver Lois Conner. Outside is a view of the Peace Garden, Ford Memorial Grove and Native Plants Garden.

The **Music & Media** collection contains over **80,000** CDs, LP (vinyl) recordings and scores of classical music, jazz, rock and folk and spoken recordings. Added to this are **6,000** DVDs and VHS

multipurpose room which extends the basket theme with metal, glass and wood lattice rising two stories toward a balcony which rings the entrance. You may notice the carpet here is a specially designed broadloom mimicking a silk mosaic and contrasting with the flame stitch pattern of the more heavily trafficked areas. ~ Please note, also, that throughout the Library the walls, flooring and furnishing use earth tones common to the valley's palette.

**To the rear of the floor is Studio 2, the home of Instruction and Outreach Services.** This is where classes will come for workshops and sessions relating to information literacy (i.e. the ability

tapes of educational and research videos in subjects supporting the courses taught at the university. All these materials are listed in the Library catalog and most may be borrowed for home use. Viewing and listening equipment is available throughout the area.

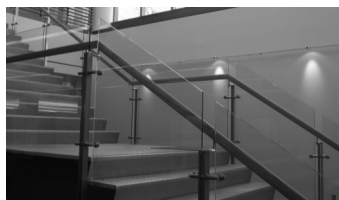
The **Teacher Resource Center** (TRC) includes teaching materials used in pre-kindergarten through grade 12 classrooms, and are used primarily by Fresno State teacher education students, for creating lesson plans for their

to recognize, locate, evaluate, use and cite information effectively). Studio 2 has two **classrooms** soon to be equipped with up-to-date technology, four **seminar rooms** and six **collaboration rooms**. Instruction and Outreach Services also has a fabulous web site, with tours, instructional videos and interactive guidance to make your experience successful

**Starbucks.** You asked for it. You got it. Settle back with your favorite latte, relax between classes and catch up with email and friends.

*Take the grand staircase or elevator up to the 3rd floor.*

coursework and practice teaching experiences. ~ The juvenile collection has fiction and non-fiction for children from preschool through junior high. Everyone, including, local teachers and residents are welcome to use the TRC and to count on the staff for their expertise and guidance.



## Other places to explore

### First Floor (South)

*Coming soon.* **Services for Students with Disabilities** (SSD) provides accommodations and academic support services for students with physical, psychological, neurological and learning disabilities, whether permanent or temporary.

### Second Floor (South)

Across the bridge is the **South Study Hall** for quiet study.

### Third Floor (South)

#### **Arne Nixon Center for the Study of Children's Literature.**

Founded in 1995 with Professor Arne Nixon's personal collection of 22,000 books, and thanks to a substantial bequest in his will, the Arne Nixon Center for the Study of Children's Literature is now a fast-growing research collection of approximately 50,000 books for children and young adults.

### Fourth Floor (South)

**Special Collections Research Center** contains rare and valuable materials in several specialized subject areas: the Larson Collection on International Expositions and World's Fairs from 1851 to the present; the Woodward Collection on local and regional history, the **University Archives**, with historical materials by or about the university, from 1911; the history of wine and wine making; the **Central Valley Political Archive**; and a general rare book collection.