

CAMPUS PLANNING COMMITTEE

BACKGROUND

In 1961 the CSU Board of Trustees gave the campus Presidents the responsibility for master planning and facility development. In delegating that responsibility to the Presidents, the Trustees resolved that a Campus Planning Committee be established at each institution to advise the Presidents on planning matters. The Trustees further resolved that representation on the committee be from the areas of educational policy, finance, and master planning. The Campus Planning Committee was then established as an administrative committee with eight members appointed by the President.

During the course of its history the composition of the committee changed until February of 1978 when the President returned the makeup of the Campus Planning Committee to that prescribed by the 1961 Board of Trustees action. Additions of further members were approved as follows: Student member in November of 1978; designee of the Director of Plant Operations in September of 1984; Manager of Grounds and Landscape Architecture in 1994; Parking Administrator in 1994; representative from President's Committee on Disabilities, Dean of the School of Agricultural Sciences and Technology, Executive Director of Auxiliary Services in January 1995, and Director of Athletics in August 1999; Associate Provost for Academic Affairs, Chair of Facilities and Campus Environmental Liaison (FACEL) Committee in August 2002; Vice President for Student Affairs (or designee) in October 2003; second Community at Large member in February 2009; remove second Community at large member in October 2009.

In September of 1986, as a result of a task force study, the Campus Planning Committee structure was revised by addition of a faculty or community-at-large member. In addition, the revisions provided for the subcommittees of Monumental Arts, Traffic and Safety, and Arboretum to act as the committee of first review for all projects or changes to the environment which may alter the basic tenets contained in the 1961 Resolution of the Trustees, each subcommittee to be chaired by a member of the Campus Planning Committee.

In the fall of 2007 President John D. Welty signed the Talloires Declaration at the dedication of the new Parking Lot V photovoltaic facility. In late 2007 the University consolidated efforts to create a broad-ranging sustainability program and efforts to become a responsible steward of the environment into a new Department of Risk Management and Sustainability. In order to provide broad-based input and guidance to this new effort, the Subcommittee on Campus Sustainability was created as part of the Campus Planning Committee.

In January 2008, the Campus Master Plan was adopted. The Master Plan provides a framework for future growth and development at Fresno State. This framework responds to the institution's mission and goals; the Strategic Plan for Excellence III 2006-2011; and Fresno State's programmatic needs by enhancing the physical environment, facilities of the campus, and the Arboretum¹ as defined by the Campus Master Plan within the academic core.

¹ The Arboretum, which houses a collection of specimen trees, is located at the center of campus and defines the core of the campus as outlined in the Master Plan. (This excludes most parking lots.) Specific boundaries are shown in the map in appendix A.

In September 2012, in consultation with the Academic Senate Executive Committee and as recommended by the Campus Planning Committee, it was proposed to expand the composition of the committee to include a faculty representative from each school/college and the library. The school/college and library representatives are expected to report back to their respective school/college on all committee discussions. Academic Senate representatives will report back to the Academic Senate. In light of this expansion, the composition was further revised to remove the FACEL representative.

Furthermore, in October 2012, given the inclusiveness of the new structure, it was recommended by the CPC Chair to the President to dissolve all subcommittees (Arboretum, Campus Sustainability, Monumental Arts, and Traffic & Safety) as recommended by Campus Planning. In November 2012, after consultation with the Academic Senate, the President accepted the CPC recommendation.

ROLE OF THE COMMITTEE

The Campus Planning Committee is an administrative committee, the primary function of which is to assist the President in the coordination, development and control of short- and long-range plans for the physical development of the campus as defined by the Campus Master Plan, within a framework established by the Trustees of The California State University. The committee serves in an advisory capacity in relation to the following:

- a. Development and maintenance of a long-range plan, Campus Master Plan, for the physical development of the campus.²
- b. Selection of sites for each new building and other physical facilities, permanent artwork, landscape, upgrades, roadways, etc. on the campus.
- c. Review the work of the architects and engineers during the preliminary drawing phase.
- d. Review and make recommendations on the five-year and other long-range building programs.
- e. Work with city and county planning commissions on matters related to campus development, zoning in areas surrounding the university, streets and highways leading to and from the campus, and other matters.
- f. Study and review the areas delegated to it by the University President.

² The campus is defined by the area now bounded basically by Shaw, Willow, Sierra, Cedar, Barstow, Millbrook, and Bulldog Lane. Specific boundaries are shown in the map in appendix B.

COMPOSITION OF COMMITTEE:

The present composition of the Campus Planning Committee is as follows:

President or designee (Vice President for Administration), Chair

Associate Vice President for Facilities Management, Vice Chair

Director of Facilities Planning³

Two – three faculty members recommended by the Chair of the Academic Senate and appointed by the President (three-year term)

A faculty representative from each school/college and the library, recommended by the Dean of each respective school/college and appointed by the President (three-year term). A Faculty representative from a school/college or library may fill one of the two faculty positions recommended by the Academic Senate at the Senate's discretion.

One Community-at-large member appointed by the President (three-year term)

Staff member recommended by the Chair of the Staff Assembly and appointed by the President (three-year term)

Student member recommended by the Associated Students Inc. and appointed by the President (one academic year term)

Representative from the President's Committee on Disabilities appointed by the President (three-year term)

Consulting Architect

Consulting Landscape Architect

Dean, Jordan College of Agricultural Sciences and Technology

Director of Athletics or designee

Executive Director, Auxiliary Services

Representative from Facilities Planning in the Chancellor's Office, The California State University

Supervisor of Grounds and Landscape Architecture as designated by Associate Vice President for Facilities Management

Parking Administrator

Associate Provost for Academic Affairs or designee

Vice President for Student Affairs or designee (ex-officio, voting)

Approved by the President	March 29, 2004
Approved by the President	April 16, 2008
Approved by the President	February 10, 2009
Approved by the President	October 22, 2009
Approved by the President	November 28, 2012

³ Formerly known as the Executive Dean or College Officer in Charge of the Building Program

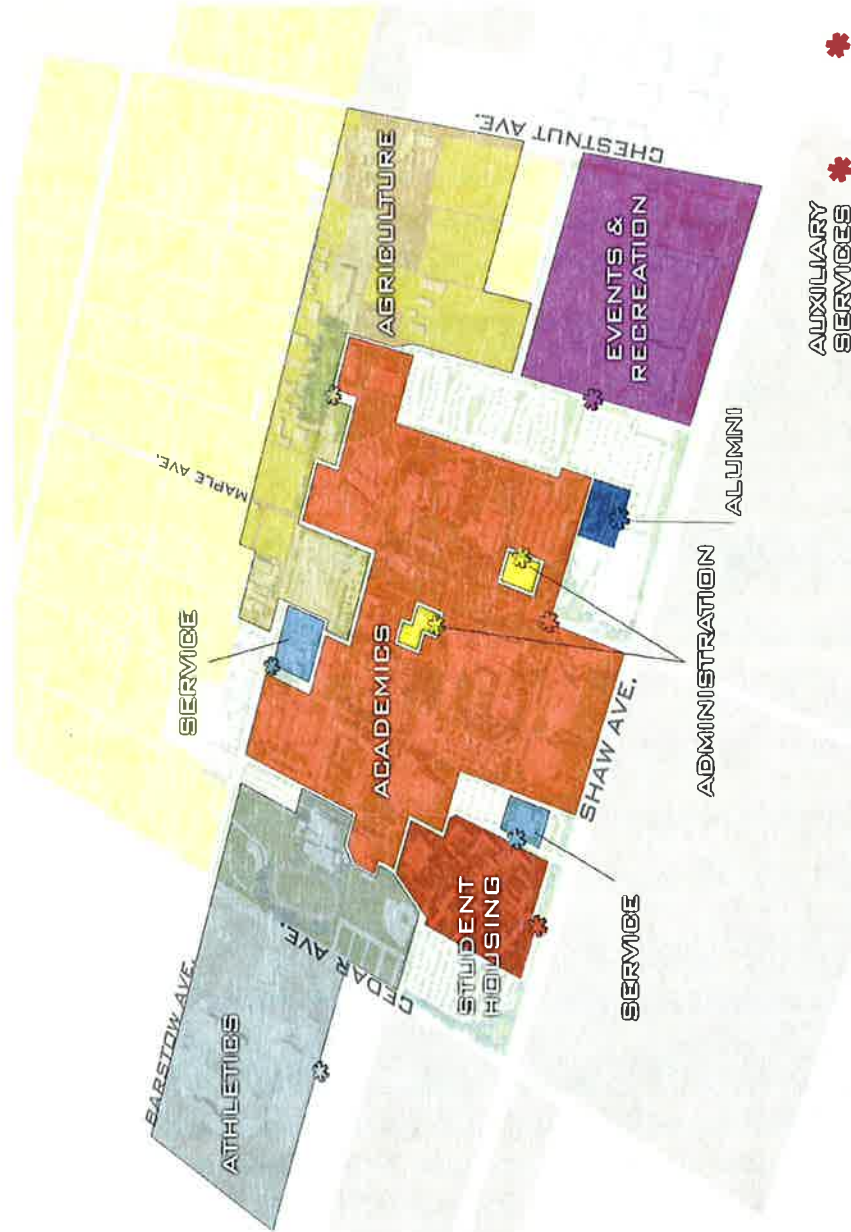
Appendix A

Methodology

The master plan team began by gaining a thorough understanding of the values and aspirations of the University in areas of academics, student life, faculty and staff needs. Against these were measured the interests and expectations of every constituency on campus through an extensive series of interviews. Significant among these were interviews with each of the deans to probe their expectations for program changes over the next decade. Meanwhile, available inventory information on campus buildings, open spaces, parking and other facilities was reviewed, verified and supplemented as necessary. The next critical step was to estimate additional facilities needs over the next ten years.

Two subsets of the inquiry process concerned Athletics and the Farm. Each has near-exclusive control of a large area adjoining the academic campus, yet is strongly linked to the campus. The nature of those links was closely examined since a holistic view of university facilities is necessary to the success and usefulness of the master plan. A series of meetings and tours served to inform the master plan team of the special circumstances affecting Athletics and Agriculture facilities and programs, and illuminated ways in which ties to the academic campus could be strengthened.

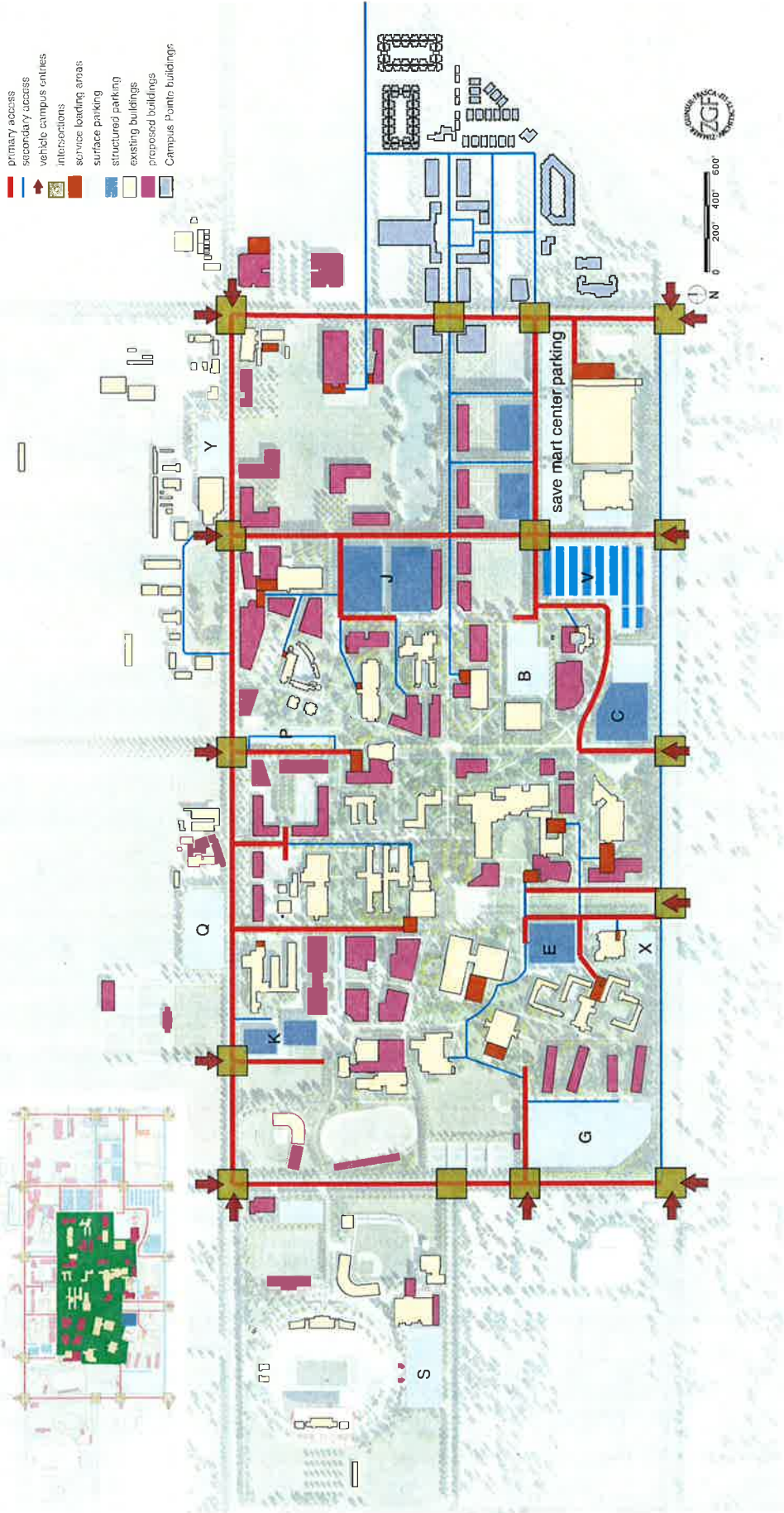
The age, condition and suitability of each building on campus was assessed, and a plan for incremental replacement of obsolete structures over the next decade was coordinated with a program of new construction and remodeling, reconfiguration of parking and access, and progressive improvement of campus landscape consistent with an overall master plan. Taken together, the products of these efforts provide a firm basis on which to build a campus master plan for the future as summarized in the recommendations which follow.

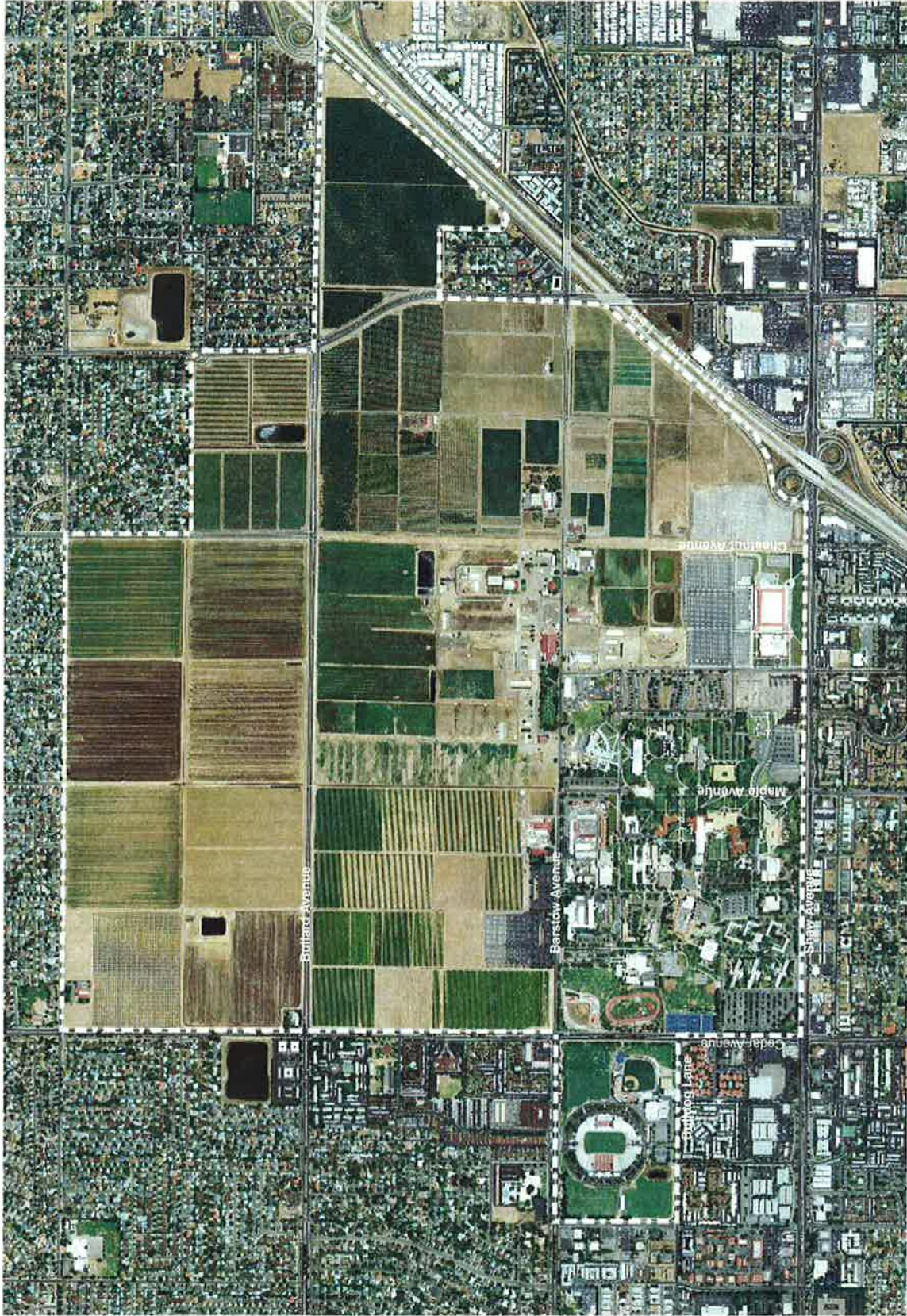


The layout of the campus and its general organization by use remains the same today as it was in the 1963 master plan, with the Student Recreation Center, Sage Mari Center, Campus Pointe, and parking lots reaching east of Woodrow to the east side of Chestnut Avenue.

NON-PUBLIC VEHICULAR AREA (ARBORETUM FOCUS)

PROPOSED 20-YEAR VEHICLE CIRCULATION





2 An aerial view of the campus and farm properties in 2007.