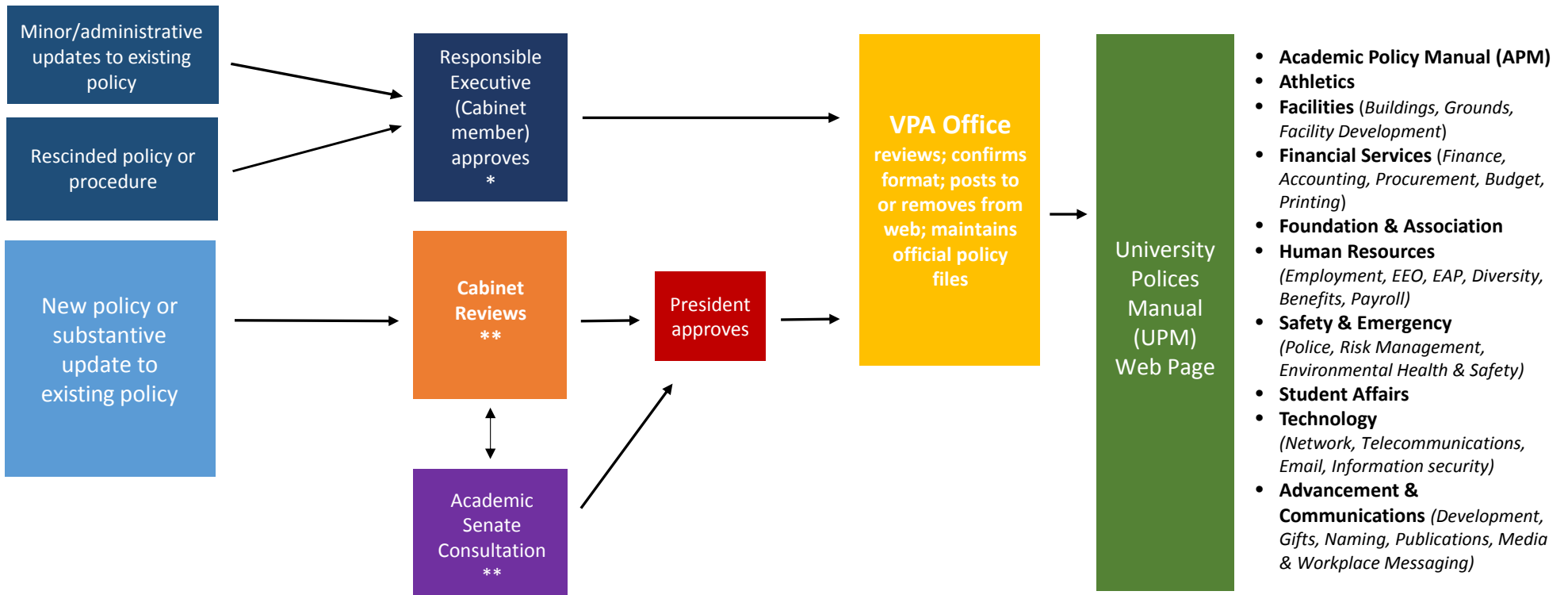


Fresno State Administrative Policy Flow Chart



- **Academic Policy Manual (APM)**
- **Athletics**
- **Facilities** (Buildings, Grounds, Facility Development)
- **Financial Services** (Finance, Accounting, Procurement, Budget, Printing)
- **Foundation & Association**
- **Human Resources** (Employment, EEO, EAP, Diversity, Benefits, Payroll)
- **Safety & Emergency** (Police, Risk Management, Environmental Health & Safety)
- **Student Affairs**
- **Technology** (Network, Telecommunications, Email, Information security)
- **Advancement & Communications** (Development, Gifts, Naming, Publications, Media & Workplace Messaging)

* The Responsible Executive may consult with the President and/or Cabinet if necessary.

** The President's Cabinet will refer Administrative policies to the Academic Senate for consultative review and feedback.

Fresnostate.edu/mapp/index.html