

## Program Standards

### BCLAD Courses and Bilingual Authorization Standards Matrix

<b>Spanish BCLAD</b>	Standards addressed
SPAN 119 Advanced Grammar	3.3; 3.5; 3.7; 3.8 4.3; 4.8; 4.9; 4.10; 4.13; 4.14 6
SPAN 121A Advanced Composition	3.3; 3.5; 3.7; 3.8; 3.10 4.2; 4.3; 4.8; 4.9; 4.10; 4.13; 4.14 6
SPAN 134 Spanish in Bilingual Schools	3.3; 3.5; 3.7; 3.8; 3.10 4.1; 4.2; 4.3; 4.4; 4.8; 4.9; 4.10; 4.13; 4.14; 4.15 6
CLS 116 Cultural Change and the Latino	3.1; 3.3; 3.9; 3.11 4.1; 4.2; 4.9; 4.10 5.1; 5.2; 5.3
LEE 136 Teaching Content in Spanish	3.1; 3.2; 3.3; 3.4; 3.5; 3.6; 3.7; 3.8; 3.9; 3.10; 3.11 4.1; 4.2; 4.4; 4.5; 4.6; 4.7; 4.8; 4.9; 4.10; 4.11; 4.12; 4.13; 4.14; 4.15; 4.19 6
<b>Hmong BCLAD</b>	
HMONG 100 Intermediate Hmong Reading	3.5; 3.7; 3.10 4.2; 4.4; 4.8; 4.10; 4.13; 4.14 6
HMONG 101 Advanced Hmong Composition	3.5; 3.6; 3.8; 3.10 4.2; 4.3; 4.4; 4.5; 4.6; 4.9; 4.10; 4.14 6
LEE 129 Hmong in Bilingual Schools	3.10 4.1; 4.10 6
ANTHRO 123 Peoples and Cultures of Southeast Asia	3.3 5.1; 5.2; 5.3; 5.4
LEE 135 Teaching Content in Hmong	3.9; 3.10 4.1; 4.5; 4.7; 4.13 6
<b>Multisubject credential courses meeting Bilingual Authorization Standards</b>	
LEE 172 Cultural and Language Context of the Classroom	3.1; 3.2; 3.3; 3.6; 3.7; 3.10; 3.11 4.2; 4.4; 4.5; 4.6; 4.7; 4.9; 4.1 5.1; 5.4; 5.7
EHD 170C Field Study C / Grades K-8 [BCLAD students in bilingual placements]	4.7 6

Figure 1: Pathway for 2042 Multiple Subject Preliminary Credential with Bilingual Reauthorization Credential

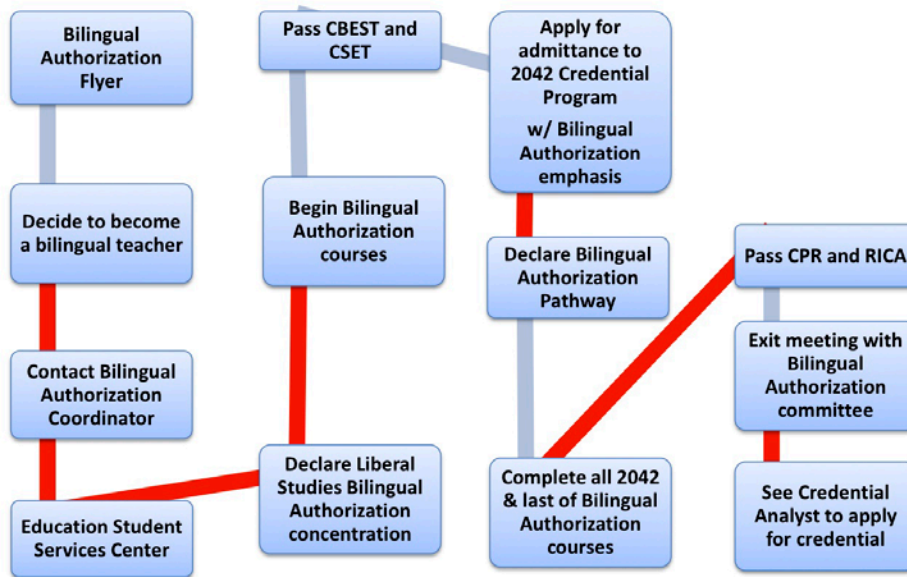


Figure 2. Bilingual Authorization Coursework by Department

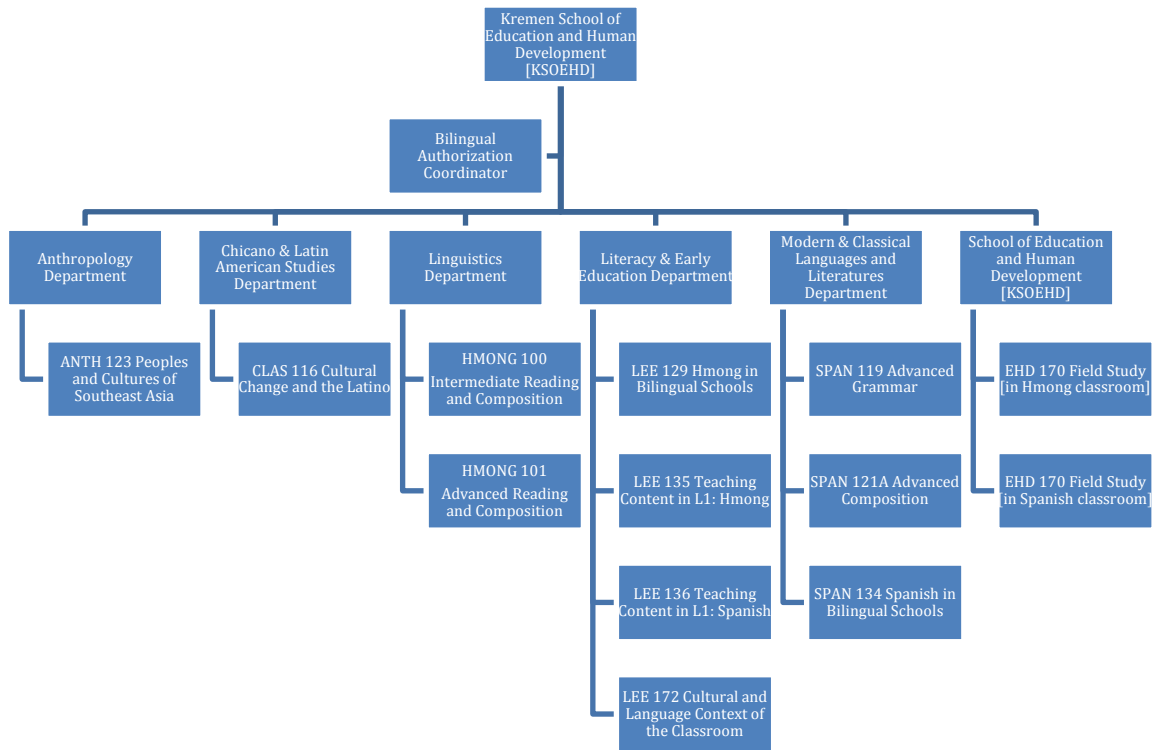


Table 5. Bilingual Authorization Standards Supported through Coursework

Standards on Language	Standard 3 The Context for Bilingual Education and Bilingualism	Standard 4 Bilingual Methodology	Standard 5 Culture of Emphasis	Standard 6 Assessment of Language Competence
Spanish Coursework	<p>Span 134 Spanish in Bilingual Schools</p> <p>LEE 172 Cultural and Language Context of the Classroom</p>	<p>LEE 136 Teaching Content in Spanish</p> <p>LEE 172 Cultural and Language Context of the Classroom</p>	<p>CLAS 116 Cultural Change and the Latino</p>	<p>SPAN 119 Advance Grammar</p> <p>SPAN 121A Composition A</p> <p>SPAN 134 Spanish in Bilingual Schools</p> <p>EHD 170 Field Study C/ Grades K-8 [students in bilingual placement Spanish]</p>
Hmong Coursework	<p>LEE 129 Hmong in Bilingual Schools: BCLAD</p> <p>LEE 172 Cultural and Language Context of the Classroom</p>	<p>LEE 135 Teaching Content in Hmong</p> <p>LEE 172 Cultural and Language Context of the Classroom</p>	<p>ANTH. 123 Peoples and Cultures of Southeast Asia</p>	<p>HMONG 100 Intermediate Reading and Composition</p> <p>HMONG 101 Advanced Reading and Composition</p> <p>EHD 170 Field Study C/ Grades K-8 [students in bilingual placement Hmong]</p>

Table 6. Language Courses in Order of Course Taking

<p>Liberal Studies Spanish Concentration</p> <p>SPAN 119    Advanced Grammar</p> <p>SPAN 121A    Advanced Composition</p> <p>SPAN 134    Spanish in Bilingual Schools (* integrated into course is a Language Proficiency Exam)</p> <p>Multiple Subject Credential seeking Bilingual Authorized Credential</p> <p>LEE 136        Teaching Content in Spanish</p> <p>EHD 170 Field Study C/ Grades K-8 (* Oral language proficiency observed in lesson delivery)</p> <p>Completion of Program Bilingual Coordinator certifies satisfactory completion of candidate's language coursework which includes meeting a standard language proficiency level of Intermediate High</p>	<p>Liberal Studies Hmong Concentration</p> <p>HMONG 100    Intermediate Hmong Reading</p> <p>HMONG 101    Advanced Hmong Composition</p> <p>LEE 129        Hmong in Bilingual School (* integrated into course is a Language Proficiency Exam)</p> <p>Multiple Subject Credential seeking Bilingual Authorized Credential</p> <p>LEE 135        Teaching Content in Hmong</p> <p>EHD 170        Field Study C/ Grades K-8 (* Oral language proficiency observed in lesson delivery)</p> <p>Completion of Program Bilingual Coordinator certifies satisfactory completion of candidate's language coursework, which includes meeting a standard language proficiency level of Intermediate High</p>
---	--

Table 7: Verification of Spanish and Hmong Coursework equivalent to the CESET-LOTE Examination in Listening, Speaking, Reading, and Writing

Standard Element	Where	How
<p>6.1 The institution must verify, during the program or at its completion that the candidate has attained, in listening, speaking, reading and writing a language proficiency level that is equivalent to a passing score on the appropriate CSET: LOTE language examination.</p>	<p>Important to note that the three Spanish classes, (Span 119 Advance Grammar, Span 121 Advan. Comp. Span 134 Spanish in Bilingual Schs.) and the three Hmong classes (Hmong 100 Intermediate Reading &amp; Comp., Hmong 101 Advan. Reading &amp; Comp. Lee 129 Hmong in Bilingual Schs.). Lee 135 and 136 are also conducted in Spanish or Hmong and that students submit their written assignments in either Spanish or Hmong. Student oral presentations are either in Spanish or Hmong.</p> <p>Span 119 Advance Grammar Span 121 Advance Composition Span 134 Spanish in Bilingual Schools</p> <p>Hmong 100 Intermediate Reading and Composition Hmong 101 Advanced Reading &amp; Composition Lee 129 Hmong in Bilingual Schools LEE 135 Teach Content in Hmong</p> <p>EHD 170 Field Study C/ Grades K-8 (Spanish and Hmong classroom environment)</p>	<p>Quick writes, pair/share and small group discussions (both Spanish and Hmong courses) Class Discussions (both Spanish and Hmong courses) Oral Presentations (both Spanish and Hmong courses) Reading that includes book chapters, articles, curriculum, etc. (both Spanish and Hmong courses) Written Lesson Plans (both Spanish and Hmong courses) Reflections Written in Spanish (both Spanish and Hmong courses) Course signature assignments (both Spanish and Hmong courses)</p> <p>Oral language proficiency observed in lesson delivery</p> <p>Administered at the completion of Span 134 (Spanish) and Lee 129</p>

	<p>Formal Assessment Exam in both Spanish &amp; Hmong which are equivalent to the Interagency Language Roundtable Scale for Language Proficiency (ILR)</p>	(Hmong)
<p>6.2 The program creates clear guidelines by which the candidate will be assessed.</p>	<p>Check List Advising Form (see form in Appendix, Forms)</p> <p>ILR Language Proficiency Scale</p> <p>Span 134 Spanish in Bilingual Schools Lee 129 Hmong in Bilingual Schools</p> <p>Span 134 Spanish in Bilingual Schools Lee 129 Hmong in Bilingual Schools</p>	<p>Coordinator</p> <p>Entry and Exit ILR exam</p> <p>Rubric for evaluation of Spanish language (adapted from descriptions of language levels developed by the ILR and equivalent to the ACTFL scale)</p> <p>Bilingual Assessment Coordinator or Span 134 (Spanish) and Lee 129 (Hmong) course instructor to assess candidates entry and exit levels of language proficiency</p>