

thesis review 2010

As a culminating experience for the master's degree program, the thesis attests to the highest level of the student's academic, scholarly, and creative abilities. Each student works under the guidance of a faculty thesis chair and committee. The resulting thesis is viewed with pride as a reflection of the scholarly promise of the student and a commitment to excellence for the university. This spring 2010 semester, 70 students completed theses and dissertations in areas as varied and original as the students themselves. What follows is a complete list of spring 2010 publications by college/school and some research highlights.

JORDAN COLLEGE OF AGRICULTURAL SCIENCES AND TECHNOLOGY

Food Science and Nutrition

Wan-Hsia Lee

Eating Behaviors in Overweight/Obese California State University, Fresno Students

(Chair: Sandra Witte)

Regina Ocampo

The Effect of Nutrition Education with Parent Components on Participation in the School Breakfast Program

(Chair: Dennis Ferris)

Fredie Pacudan

A Comparative Study of an Ecofriendly Lye Peeler Prototype Versus a Current Commercial Lye Peeler

(Chair: Gour Choudhury)

Michelle Carrick

Effect of Pistachios on Resting Energy Expenditure and Weight in Subjects with Metabolic Syndrome

(Chair: Lisa Herzig)



◀ *Lye peeling is an effective method for peeling fruit and vegetables, but current lye peeling methods are wasteful and contaminate streams. Fredie Pacudan developed an **ecofriendly lye peeler** to address these issues.*

Plant Science

Emily Smith

Grapevine Deficit Irrigation and Its Effect on Mite (Acari: Tetranychidae) and Leafhopper (Hemiptera: Cicadellidae) Populations

(Chair: Andrew Lawson)



Viticulture and Enology

Sean Jacobs

Effect of Rootstock and Water Stress on Gas Exchange, Water Relations, and Water-Use Efficiency in Petite Sirah Grapevines

(Chair: Sanliang Gu)

Erik Mallea

Effect of Abscisic Acid on Tannin Development in Syrah Berries

(Chair: Sanliang Gu)



COLLEGE OF ARTS AND HUMANITIES

Creative Writing—Master of Fine Arts

Jasmine Armstrong

The Custodian's Daughter

(Chair: Timothy Skeen)

Marcus Chinn

The Crayon Eater

(Chair: Timothy Skeen)

Juan Guzman

Another Mouth

(Chair: Connie Hales)

Rachel Jackson

Here and Gone: A Memoir

(Chair: Steven Church)

Vicki Johnson

Mirage

(Chair: Alex Espinoza)

Sarah Fawn Montgomery

How We Are: Our Memoir in Forms

(Chair: Steven Church)

Amanda Smith

Life Imagined

(Chair: Alex Espinoza)

Sallie Saiz

Mi vida de chocoláte

(Chair: John Hales)



Art

Emily Krause

Suzanne Lacy: *Three Weeks in May*

(Chair: Keith Jordan)

English

Joyce Baker

Literary Depictions of Anglo-Saxon Queens

(Chair: Lisa Weston)

Corinth Gibbs

Edith Nesbit's *Stories of the Bastables*: Construction of a New Genre of Literature for Children

(Chair: Ruth Jenkins)



◀Joyce Baker's thesis depicts how early medieval writers modeled cultural ideologies of **queenship** during a time when that institution was changing and the queen's role was not clearly defined.

Andrea Mele

Critical Jouissance: Re-Reading Genre, Performativity, and Politics in Lesbian Nonfiction

(Chair: John Beynon)

◀ Andrea Mele constructs a **reading theory** with which to approach lesbian nonfiction works, including autobiographical comic strips, memoir, and critical texts.

Sharla Seidel

Teaching Large-Scale Revision: Pedagogical Implications and First-Year Writing Students

(Chair: Virginia Crisco)



Modern and Classical Languages and Literatures

Sanjuana López Hernández

La relacion entre la realidad, ficcion y exageracion en la novela picaresca

(Chair: Ted Bergman)

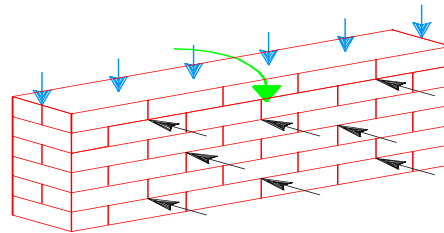
COLLEGE OF ENGINEERING

Civil Engineering

Gurjot Gill

Analysis of Slender Masonry Walls with Moment Magnification Method

(Chair: Ching Chiaw Choo)



COLLEGE OF HEALTH AND HUMAN SERVICES

Kinesiology

Daisuke Shibata

The Effect of Stretch-Shortening Cycle-Induced Muscle Fatigue on Premotor Reaction Time

(Chair: Jacobo Morales)



Amanda Stetler

The Effects of an Inspiratory Muscle Training Program on Maximal Inspiratory Pressure and Swimming Performance

(Chair: Felicia Greer)

Zoltan Torok

The Effect of Creatine and/or Caffeine Ingestion on Repeated Bouts of High-Intensity Exercise Performance

(Chair: Felicia Greer)

Social Work Education

Leticia Rubio

The Utilization of Preplacement Preventive Services in a Public Child Welfare Agency
(Chair: Betty Garcia)



KREMEN SCHOOL OF EDUCATION AND HUMAN DEVELOPMENT

Doctoral Program in Educational Leadership

Idia Abode

The Impact of Student Response System on Third Graders' Learning, Motivation, and Engagement
(Chair: Susan Tracz)

Johnny Alvarado

Encouraging Preadolescent Emotional Intelligence Through Leadership Activity
(Chair: Pamela Lane-Garon)

Jothany Blackwood

The Influence of Mentoring on Female Administrators and Leaders in California Community Colleges
(Chair: Sharon Brown-Welty)

Devin Blizzard

Whose Accountability is it? Conceptual Metaphor and Affinity for Learning Outcomes Based Accountability: Comparisons between California PreK-12 and Higher Education Leaders
(Chair: Sharon Brown-Welty)

Kimberley Boyer

Investigating Differences among Asian American Youth Participating and not Participating in Grant-Funded High School After-School Programs
(Chair: Susan Tracz)

Teneecia Brannon

The Effects of Classroom Management Beliefs/Ideologies on Student Academic Success
(Chair: Sharon Brown-Welty)

Rob Darrow

A Comparative Study Between Online Charter High Schools and Traditional High Schools in California
(Chair: Kenneth Magdaleno)



Improving California's education system is a core function and mission of California State University (CSU). The CSU system is particularly well-suited to helping bring more education doctorates to underserved populations, given its success in attracting, retaining and graduating students from underrepresented groups.

<http://education.csufresno.edu/dpelfs/>

*↳ Rob Darrow compared students attending online charter schools with students attending traditional high schools in California to determine if **at-risk students** are more successful in online charter schools.*

Ben Drati

Closing the Achievement Gap: A Study on the Relationship Between Emotional Intelligence, Race Identity Attitudes, and Academic Achievement with African American Adolescents
(Chair: Kenneth Magdaleno)

Marc Hammack

Perceived Leadership Practices of California Elementary Principals in Relation to Leadership Coaching
(Chair: Donald Wise)

Melissa Ireland

An Examination of the Relationship Between Teachers’ Perceptions of the Presence of Professional Learning Community Attributes and Student Achievement
(Chair: Susan Tracz)

Shannon Lawrence

Closing the Achievement Gap: Factors That Promote Academic Resilience in High School Foster Youth
(Chair: Kenneth Magdaleno)

Gary Lowe

Correlations Between California Academic Performance Index Scores and College Attendance Rates
(Chair: David Tanner)

The doctoral dissertation is the culminating experience for doctoral studies in the Doctoral Program in Educational Leadership at Fresno State. This year marks the first class of doctoral students to complete the independent Ed.D. Twenty students completed dissertations, demonstrating the highest level of scholarship.



< Gary Lowe sought to determine whether API scores are correlated with college attendance rates.

Eimear O’Farrell’s study contributes to the sustainability of mentored peer mediation programs in schools, by providing a clearer understanding of the interconnections among academic achievement, developmental disposition, and conflict orientation.

Eimear O’Farrell

The Effects of Participation of School Children as Mediators in Contrast to Non-Mediators in a Mentored Mediation Program as Related to Academic Achievement, Developmental Disposition, and Conflict Orientation
(Chair: Elaine Garan)

Ron Oxford

Library 2.0 and Information Competency in California Community College Distance Education Programs: A Descriptive Study
(Chair: Ron Unruh)

Tangee Pinheiro

Outcomes of a Summer Institute for Teachers of Students with Autism and Emotional Disturbance
(Chair: James Marshall)

Adrian Ramirez

The Impact of the College Assistance Migrant Program on Migrant Student Achievement in the California State University System
(Chair: Ron Unruh)



Mark Sanchez

Effectiveness of Student Support Services Programs at California Community Colleges

(Chair: Ron Unruh)

Tracy Smith

Second Grade Teachers' Literacy Instruction: Linking Beliefs to Practice

(Chair: Elaine Garan)

Klaus Tenbergen

How Do Course Articulation Agreements Facilitate the Transfer and Completion of a Bachelor's Degree: A Comparison of Native and Transfer Students

(Chair: Sharon Brown-Welty)



◀ Klaus Tenbergen researched the use of well-established **articulation agreements** traditional within higher education institutions in California and their impact on student transfer and completion time-frames and rates.

Counseling, Special Education, and Rehabilitation

Ella Shasky

The Effects of Social Skills Training on a Student with Attention Deficit Hyperactivity Disorder

(Chair: Susan Tracz)

COLLEGE OF SCIENCE AND MATHEMATICS

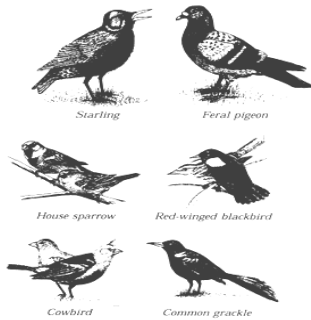
Biology

Laura Miller

Canine Heartworm (*Dirofilaria immitis*) in Fresno and Madera Counties, Ca: Prevalence Differences Between Foothill and Valley Floor Habitats

(Chair: Paul Crosbie)

◀ Laura Miller evaluated the presence of **heartworm antigen** in domestic dogs in Madera and Fresno Counties to test for the effects of habitat and other environmental variables on prevalence.



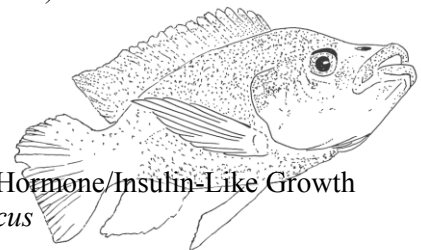
Bradley Schleder

Residential Irrigation as a Driver of Urban Bird Community Structure (Chair: Madhusudan Katti)

Sara Nilmeier

The Effect of Ghrelin on Glucose Metabolism and the Growth Hormone/Insulin-Like Growth Factor-I (Gh/Igf-i) Axis in the Tilapia, *Oreochromis mossambicus*

(Chair: Larry Riley)



Biotechnology

Julie Hale

Proteomic Evaluation of Pesticide-Resistant Breast Cancer Cell Lines

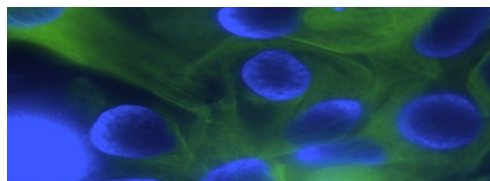
(Chair: Jason Bush)

◀ Julie Hale analyzed statistical data suggesting that past use of pesticides Methoxychlor and Toxaphene shows a positive association with age-adjusted incidence of **breast cancer in Hispanic women** in Central California counties.

Shaghayegh Morshedian

Comparative Analyses of Osteotropic Human Breast Cancer Cells in Response to a Bisphosphonate Drug

(Chair: Jason Bush)



Chemistry

Kurtis Thiesen

Synthesis, Characterization, and Use of New, Chiral P-N Ligands in the Palladium-Catalyzed Asymmetric Allylic Alkylation, and a New Synthetic Route to the Preparation of Optically Active Cyclomercurated Ferrocenylimines

(Chair: Saeed Attar)



Geology

Douglas DeFlicht

Measurement and Monitoring of Bedload Sediment Transport Along the Upper San Joaquin River from Gravelly Ford to the Chowchilla Bypass Bifurcation Structure, California

(Chair: Zhi Wang)

Emily Fisher

Tectonic Inversion Related to Paired Migrating Bends and Step-Overs: A Structural and Geomorphologic Analysis of the Fish Lake Valley Area, California-Nevada

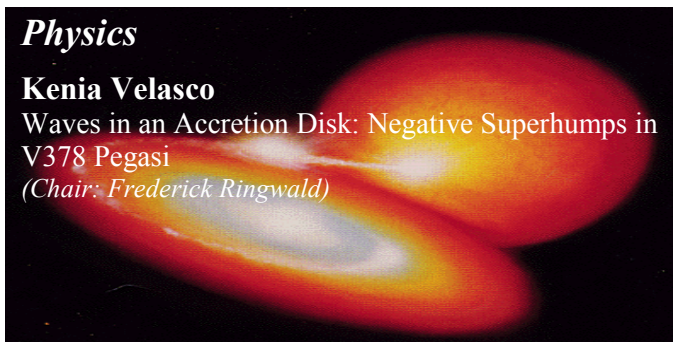
(Chair: John Wakabayashi)

Physics

Kenia Velasco

Waves in an Accretion Disk: Negative Superhumps in V378 Pegasi

(Chair: Frederick Ringwald)



◀ Kenia Velasco presented the results obtained from the unfiltered photometric observations of the cataclysmic variable **V378 Pegasi** during 2001, 2008, and 2009.

Psychology

David Hebert

Effect of Self-Management Training on Adherence to Therapeutic Exercise Regimens

(Chair: Amanda Adams)

Christopher Hernandez

The Creation and Validation of the Loneliness Engagement Scale

(Chair: Jennifer Ivie)



*J.P. Moschella's research points to the effective combination of the behavioral techniques of graduated exposure and differential reinforcement in the treatment of specific **phobias**.*

J.P. Moschella

A Component Analysis of the Effects of Graduated Exposure and Differential Reinforcement on Phobic Behaviors

(Chair: Amanda Adams)

Alyson Padgett

The Effects of Noncontingent Reinforcement on Rapport Building in Children with Autism

(Chair: Amanda Adams)

Gunjandeep Singh

Effect of Core and Sociomoral Disgust on Moral Judgments

(Chair: Paul Price)

School Psychology (Ed.S.)

Marisela Cordero

Migrant Father Involvement in Early Education Programs

(Chair: Marilyn Wilson)

*Marisela Cordero found that **migrant fathers** involved themselves in their children's noneducational activities more than in their educational activities.*

Elvira Frantz

Body Dissatisfaction, Acculturation Level, and Acculturative Stress Among Mexican American Adolescent Girls

(Chair: Marilyn Wilson)

Melissa Freitas

Exploring Teacher Judgments of Children Based on Indices of Poverty

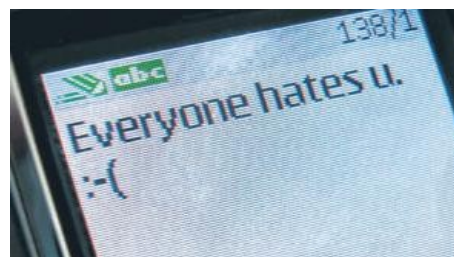
(Chair: Jean Ritter)

*Melissa Freitas explored the bases and implications of teacher judgments related to **student socioeconomic status**.*

Kately Kelly

The Characteristics and Degree of Traditional Bullying and Cyberbullying in the Schools

(Chair: Karl Oswald)



Andrea Salazar

Latino Elementary School Students' College Aspirations: Attitudinal, Normative, and Perceived Behavioral Control Precursors
(Chair: Lynnette Zelezny)



Bret Schmidt

Disproportionate Representation of Minority Students in Special and Gifted Education and the Relationship Between Social Dominance Orientation and Teacher Referrals
(Chair: Ronald Yockey)

Kong Vang

Mental Health: Identifying Barriers to Hmong Students' Use of Mental Health Services
(Chair: Marilyn Wilson)

◀ Kong Vang investigated acculturation and perceived stigmatization effects on 89 Hmong high school students' attitudes toward seeking **mental health services** and perceived barriers.

COLLEGE OF SOCIAL SCIENCES

History

Gaylord Dixon

Fifth Monarchist Visionary Inclusions
(Chair: Maritere Lopez)

◀ **Fifth Monarchists** were in positions of influence and believed it in their power and mandate to bring about immediate change. They saw themselves as a hinge of history that would open the doors of opportunity for themselves and others.

Public Administration

Simon Haeder

Hollow State, Hollow Community? Healthcare Privatization in Fresno County
(Chair: Russell Mardon)



DIVISION OF GRADUATE STUDIES

Interdisciplinary Studies

Matthew Schulz

The Role of Communication in a Consumer-Driven Health Care Market: An Analysis of Medical Setting Uncertainty and Health System Satisfaction
(Chair: Scott Moore)

◀ Matthew Schulz developed an educational marketing tool and provided it to a treatment group in an outpatient medical imaging center to measure degree of medical setting uncertainty and the impact on ratings of **health system satisfaction**.