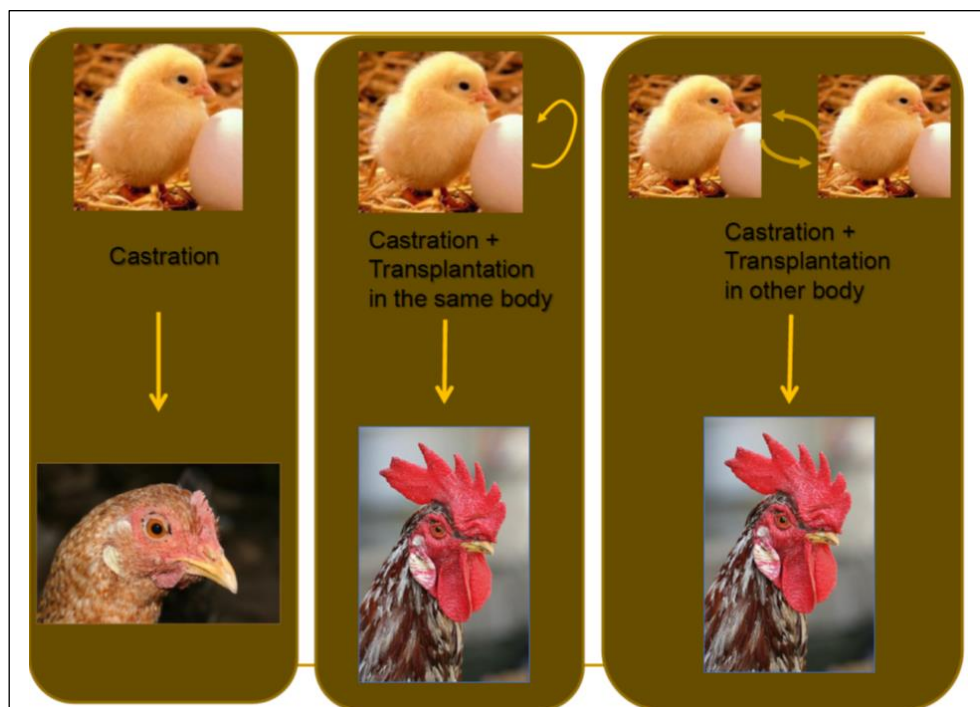


Behavioral Endocrinology

Biol 260T – Dr. Riley
Wed & Fri 9am – 10:15am
lriley@csufresno.edu

Behavioral endocrinology is the scientific study of the interaction between hormones and behavior. The interaction between hormones and behavior is bidirectional: hormones can affect behavior, and behavior can influence hormones. This field is truly an interdisciplinary field encompassing phenomena ranging from genetic, molecular, and cellular levels of analysis to the study of individual and social behaviors. This graduate course will cover topics in sex differences in behavior, hormonal regulation of parental and social behavior, homeostasis and behavior, stress, etc... The course will consist of traditional lecture, case studies/discussion, and student presentations.



First formal experiment in endocrinology by A. A. Berthold (1849). This simple experiment demonstrated that a substance produced by the testes could travel through the bloodstream and eventually affect behavior. Castrated cockerels (an immature male chicken) exhibited hen-like behaviors. When two cockerels were castrated and their testes were transplanted into the abdominal cavity of the other bird, these birds looked and behaved like normal roosters.