

EXAMINATION  
FALL 2002  
~SAMPLE~

Name \_\_\_\_\_  
Phone \_\_\_\_\_  
email \_\_\_\_\_

**I. Write the following scales without using a key signature:**

1. Eb melodic minor

2. Eb major



3. Eb harmonic minor

4. Eb natural minor



**II. Short Answer:**

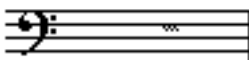
1. The relative minor of Eb major is \_\_\_\_\_
2. The key signature of Eb Major has \_\_\_\_\_ flats
3. The 7th factor of a seventh chord usually resolves \_\_\_\_\_
4. Define half cadence
5. Define agogic accent
6. Describe the basic principles of tonality
7. Harmonic rhythm
8. Retrograde Inversion
9. Planing
10. Describe the function of "augmented sixth" chords.
11. Describe the basic theoretical principles upon which Western music is based.

**III. Describe and diagram the following form (or I will play a piece and you will give me the form):**

(binary, ternary, composite, minuet and trio, rondo, sonata form, variation form, fugue, etc.)

**IV. Write the following key signature(s):**

Eb minor



V. Transpose the part below. Rewrite the notation, so that the meter is accurately reflected in the notation.

F horn Eb alto saxophone

VI. Write the following chords:

A minor Do7 Db+ C half-diminished

fm:  $\text{V6/iv}$  iv vii<sup>o</sup>2/V<sup>I</sup> VI<sup>4</sup>

5   3

VII. Below is a brief excerpt. Provide an elementary analysis: Label key(s), cadence(s), non chord tones, motive(s), sequence(s), phrase(s), period(s) etc. and give complete Roman numeral analysis of the first four measures. Provide a brief written analysis that augments (not merely describes) your labeling.

paste benward workbook I p 149 #3 here

VIII. Give key and chord analysis

**II. Complete the following:**

Write the pitch class set 0,4,7

Write and label a polychord

Write a cluster

Write a German 6th chord with Ab as the bass note

Write a Neapolitan 6th chord with A in the bass

**I. Below is a melody. Label phrase(s), cadence(s), motive, sequence. Does this melody have a sense of motion? If so, explain why (cite specific musical parameters) . Does it climax? If so, what makes you think so (cite specific musical parameters)?**

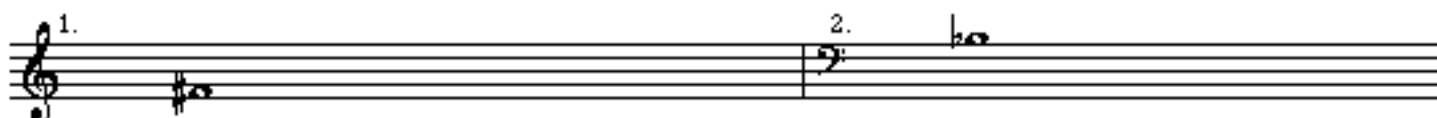
WB p 91#5

**II. What 4 part voice leading rules are violated in the example below? List, and draw an arrow to the appropriate place in the music.**

book p 171

## AURAL SKILLS

I. I will play the note listed and then another. Write the second note.



1. 2.

II. I will play a chord whose lowest note is listed. Write the rest of the notes.

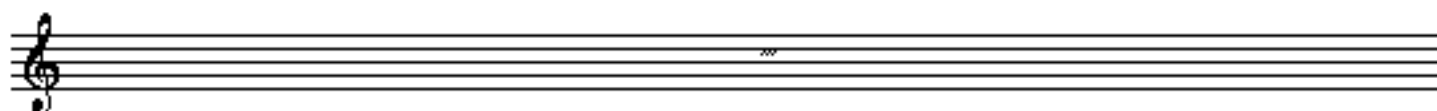


1. 2.

III.

1. What is the quality of this root position triad (major, minor, augmented or diminished)?
2. What is the quality of this root position triad (major, minor, augmented or diminished)?
3. What is the quality of this root position seventh chord (M-M, M-m, m-m, m-M, d-m, d-d)?
4. What is the quality of this root position seventh chord (M-M, M-m, m-m, m-M, d-m, d-d)?
5. This melody is based on what scale? \_\_\_\_\_

IV. Melodic dictation. Starting note will be given. Provide meter and write the melody as played.



THE STAVES BELOW ARE FOR YOUR USE:

