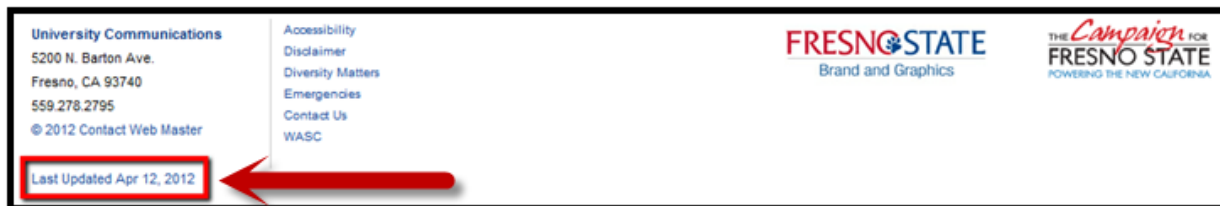


Logging in

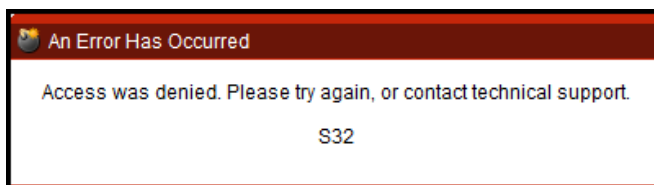
In order to have access to modify a Fresno State website, you must have attended training and have a Fresno State username and password.

1. Navigate to the Fresno State website you have permission to edit.
2. At the bottom left hand corner of the webpage click on the **Last Updated date** link to login.



3. You will be redirected to a Fresno State CAS login page. Enter your Fresno State username and password, and then click on the **Login** button.

***NOTE:** If you login to a website that you do not have permission to edit, you will see a red “Error has occurred” message, with access denied.



Click on the Change Site menu at the top right of the page to access the site you have permission to modify.

