

Cedar/Bulldog Pedestrian Scramble

What is it?

A pedestrian scramble adds an additional phase to a street signal when the crossing button is pressed to stop all vehicular traffic and allow pedestrians to cross diagonally.

The Project

- Fresno State provided City of Fresno \$13,000 to install as a part of the Cedar/Bulldog protected left turn project in summer 2015
- The first pedestrian scramble installed in the City of Fresno
- Collaborated on a shared outreach campaign

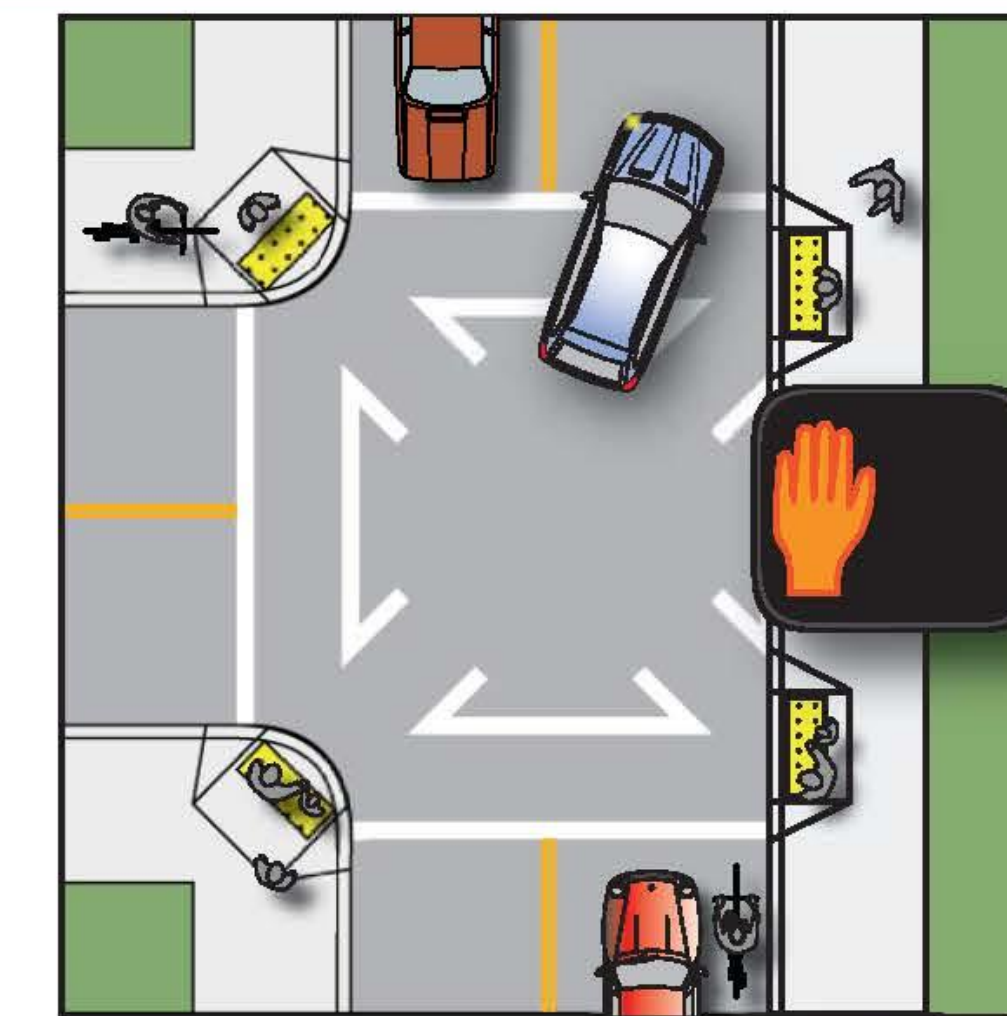


The Cedar/Bulldog intersection sees over 93,000 pedestrian & 17,000 bicycle trips each month!

Cedar Avenue at Bulldog Lane, Fresno, CA

HOW TO USE THE PEDESTRIAN SCRAMBLE

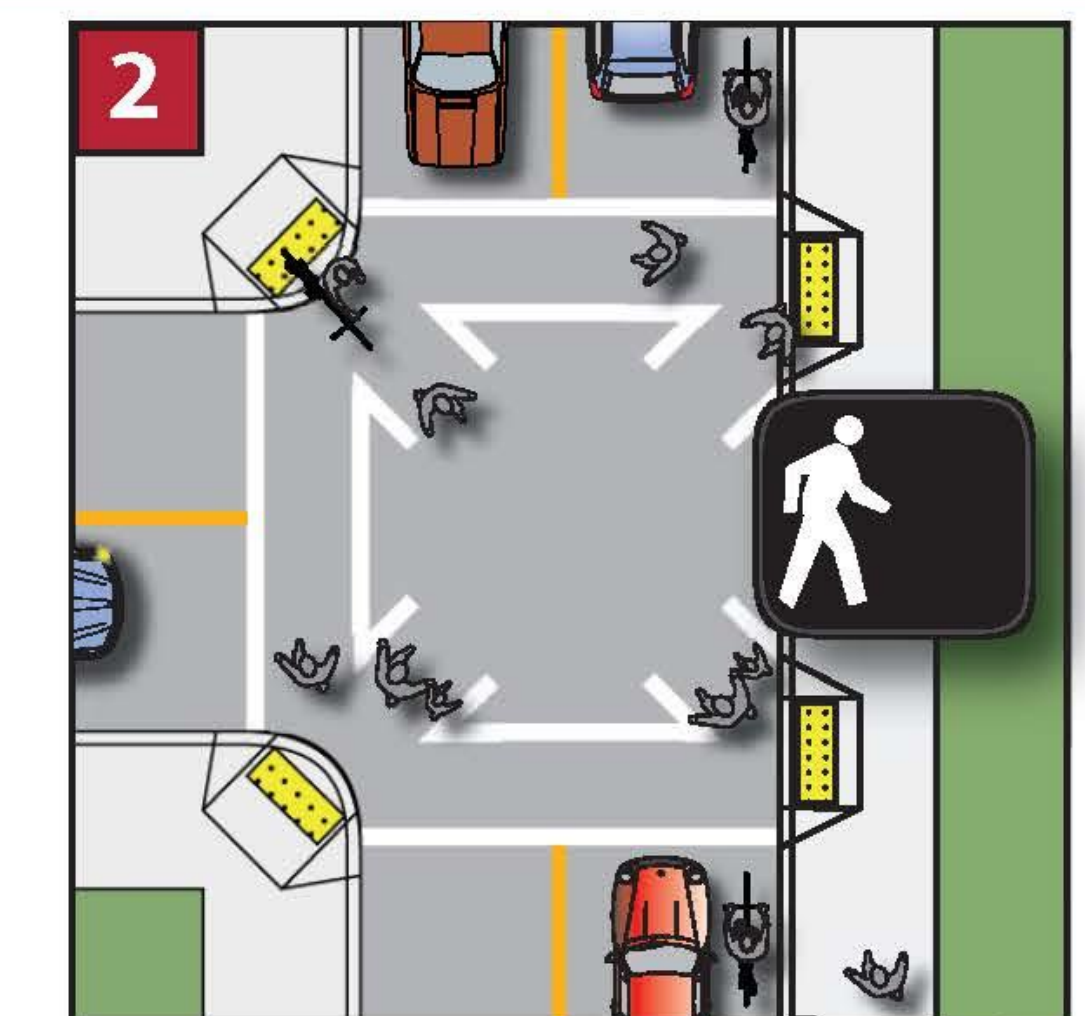
For illustration purposes only.



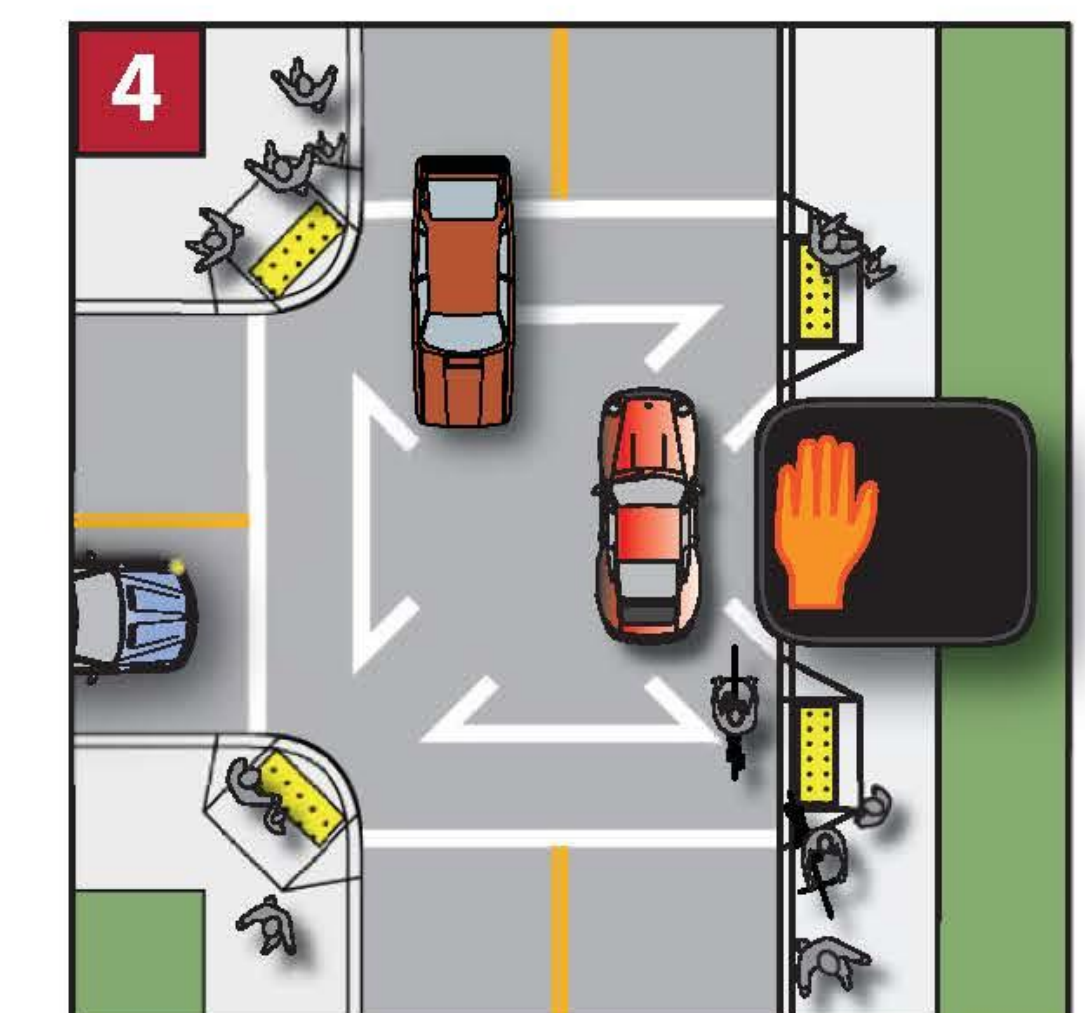
Push the call button to cross, and wait until the "walk" sign is on. Make sure to look both ways before crossing.



Do not start crossing if the hand has started flashing. Finish crossing the intersection if already started.



Start walking across or diagonally during the scramble phase, when safe to do so. People on bikes should dismount and walk across the intersection.



Do not cross while the red hand is illuminated. Bicyclists may ride across intersection with vehicles during the appropriate traffic signal.

