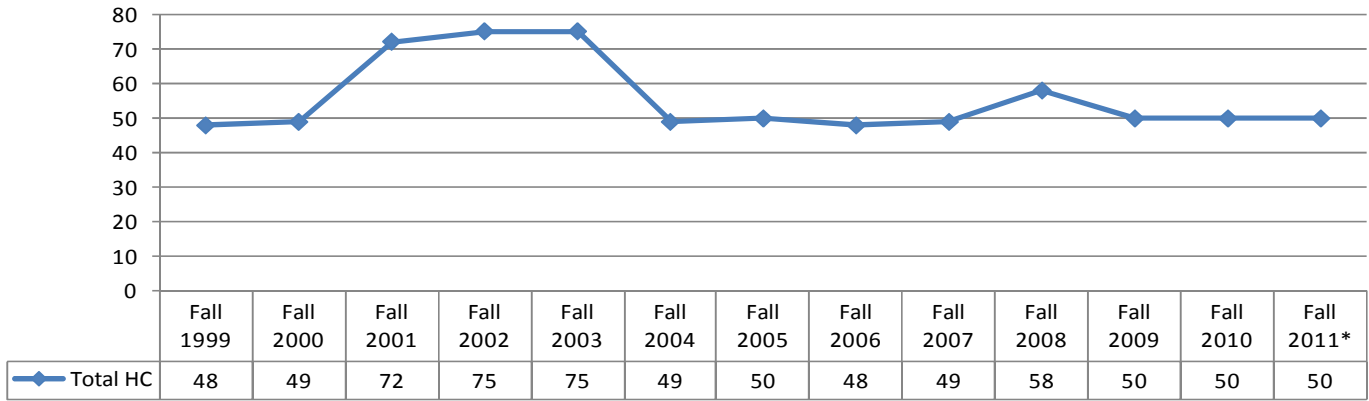


Table 1 Number of honor students



* Includes 50 students who are admitted into Honor program and registered for Fall 2011 by 06/06/2011.

Table 2 Gender distribution of honor students

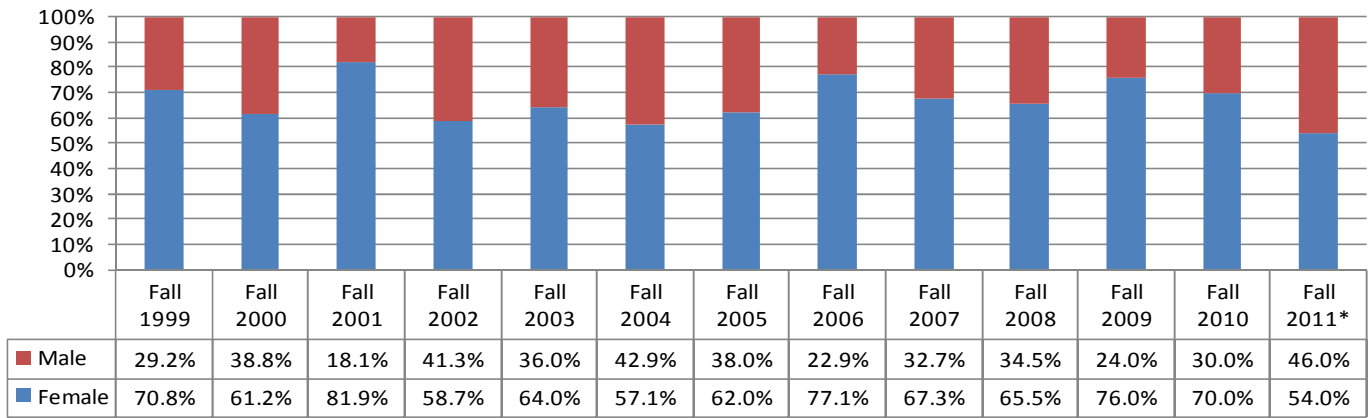
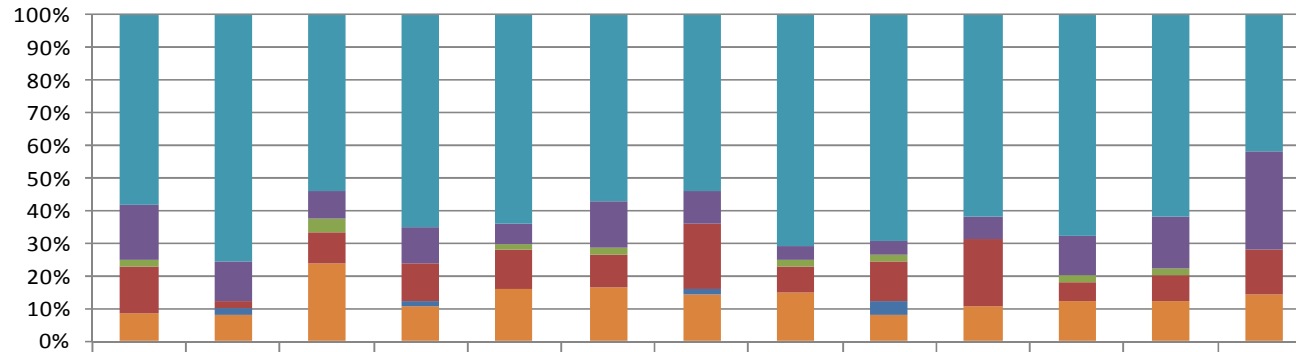
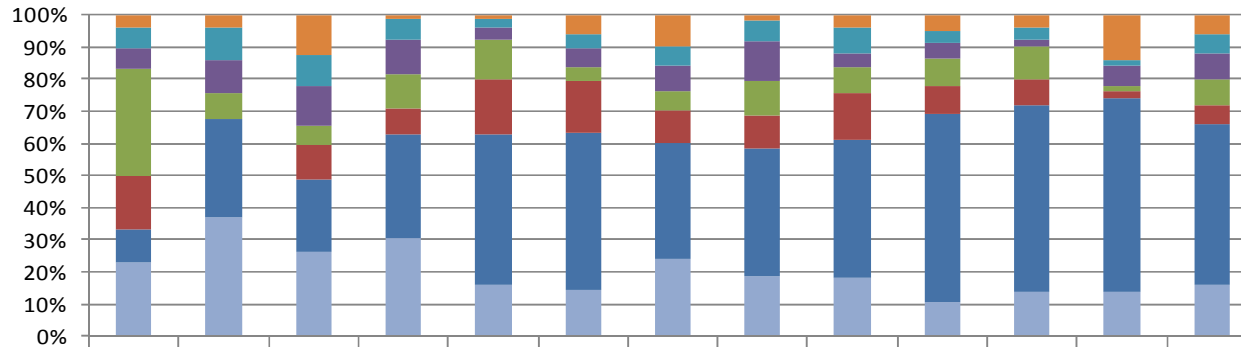


Table 3 Ethnic distribution of honor students



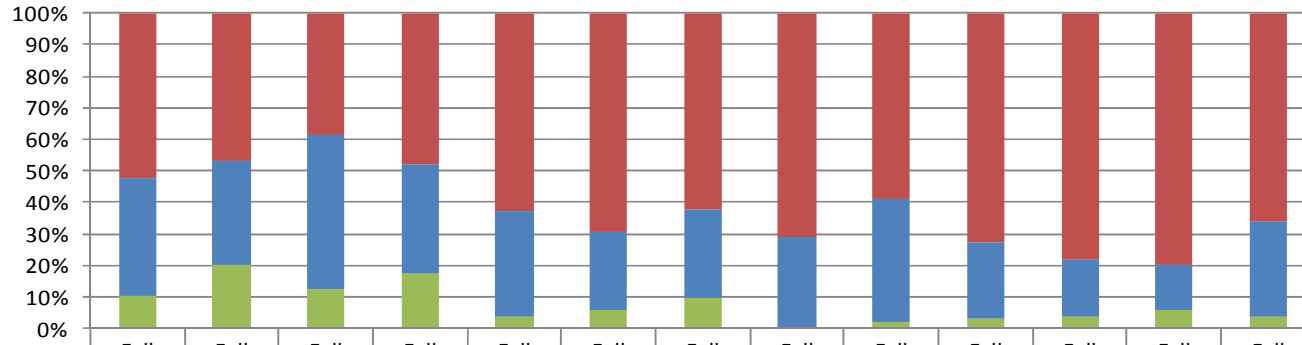
	Fall 1999	Fall 2000	Fall 2001	Fall 2002	Fall 2003	Fall 2004	Fall 2005	Fall 2006	Fall 2007	Fall 2008	Fall 2009	Fall 2010	Fall 2011*
WHITE	58.3%	75.5%	54.2%	65.3%	64.0%	57.1%	54.0%	70.8%	69.4%	62.1%	68.0%	62.0%	42.0%
HISP	16.7%	12.2%	8.3%	10.7%	6.7%	14.3%	10.0%	4.2%	4.1%	6.9%	12.0%	16.0%	30.0%
BLACK	2.1%	0.0%	4.2%	0.0%	1.3%	2.0%	0.0%	2.1%	2.0%	0.0%	2.0%	2.0%	0.0%
ASIAN	14.6%	2.0%	9.7%	12.0%	12.0%	10.2%	20.0%	8.3%	12.2%	20.7%	6.0%	8.0%	14.0%
AMER IND	0.0%	2.0%	0.0%	1.3%	0.0%	0.0%	2.0%	0.0%	4.1%	0.0%	0.0%	0.0%	0.0%
Unknown	8.3%	8.2%	23.6%	10.7%	16.0%	16.3%	14.0%	14.6%	8.2%	10.3%	12.0%	12.0%	14.0%

Table 4 Dependent family income distribution of honor students



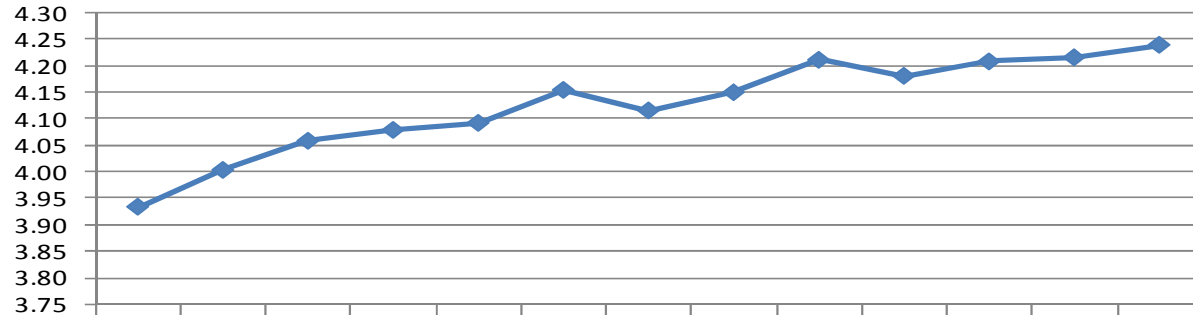
	Fall 1999	Fall 2000	Fall 2001	Fall 2002	Fall 2003	Fall 2004	Fall 2005	Fall 2006	Fall 2007	Fall 2008	Fall 2009	Fall 2010	Fall 2011*
< 24,000	4.2%	4.1%	12.5%	1.3%	1.3%	6.1%	10.0%	2.1%	4.1%	5.2%	4.0%	14.0%	6.0%
24,000 - 35,999	6.3%	10.2%	9.7%	6.7%	2.7%	4.1%	6.0%	6.3%	8.2%	3.4%	4.0%	2.0%	6.0%
36,000 - 47,999	6.3%	10.2%	12.5%	10.7%	4.0%	6.1%	8.0%	12.5%	4.1%	5.2%	2.0%	6.0%	8.0%
48,000 - 59,999	33.3%	8.2%	5.6%	10.7%	12.0%	4.1%	6.0%	10.4%	8.2%	8.6%	10.0%	2.0%	8.0%
60,000 - 71,999	16.7%	0.0%	11.1%	8.0%	17.3%	16.3%	10.0%	10.4%	14.3%	8.6%	8.0%	2.0%	6.0%
> 72,000	10.4%	30.6%	22.2%	32.0%	46.7%	49.0%	36.0%	39.6%	42.9%	58.6%	58.0%	60.0%	50.0%
Unknown	22.9%	36.7%	26.4%	30.7%	16.0%	14.3%	24.0%	18.8%	18.4%	10.3%	14.0%	14.0%	16.0%

Table 5 Parents' education of honor students



CGS	52.1%	46.9%	38.9%	48.0%	62.7%	69.4%	62.0%	70.8%	59.2%	72.4%	78.0%	80.0%	66.0%
FGS	37.5%	32.7%	48.6%	34.7%	33.3%	24.5%	28.0%	29.2%	38.8%	24.1%	18.0%	14.0%	30.0%
Unknown	10.4%	20.4%	12.5%	17.3%	4.0%	6.1%	10.0%	0.0%	2.0%	3.4%	4.0%	6.0%	4.0%

Table 6 Average HS GPA of honor students



Avg. HS_GPA	3.93	4.00	4.06	4.08	4.09	4.15	4.12	4.15	4.21	4.18	4.21	4.22	4.24
-------------	------	------	------	------	------	------	------	------	------	------	------	------	------

Table 7 Average SAT Verb and Math score of honor students

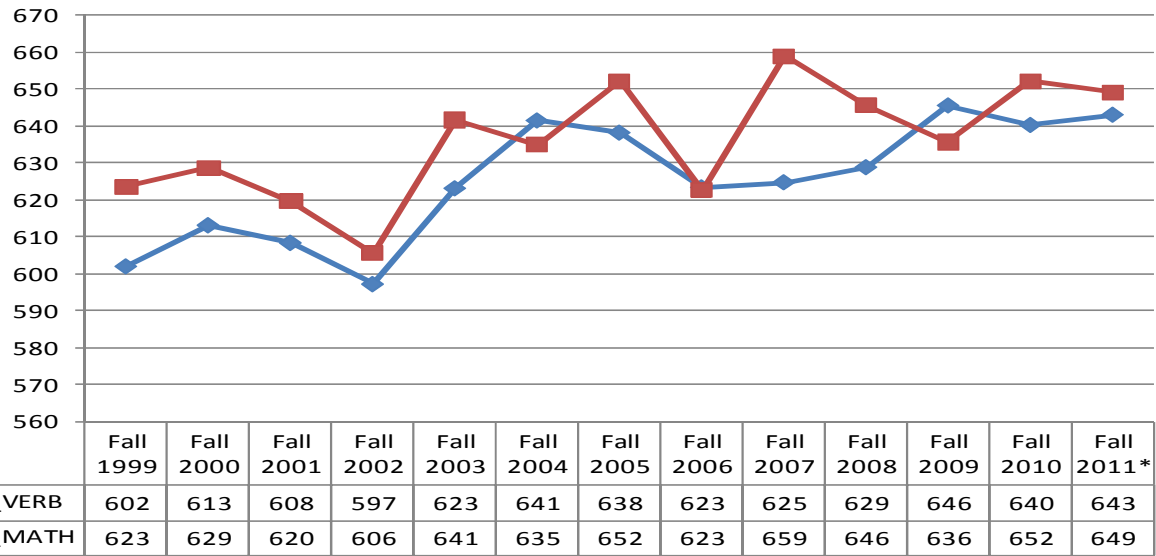


Table 8 Average SAT composite score of honor students

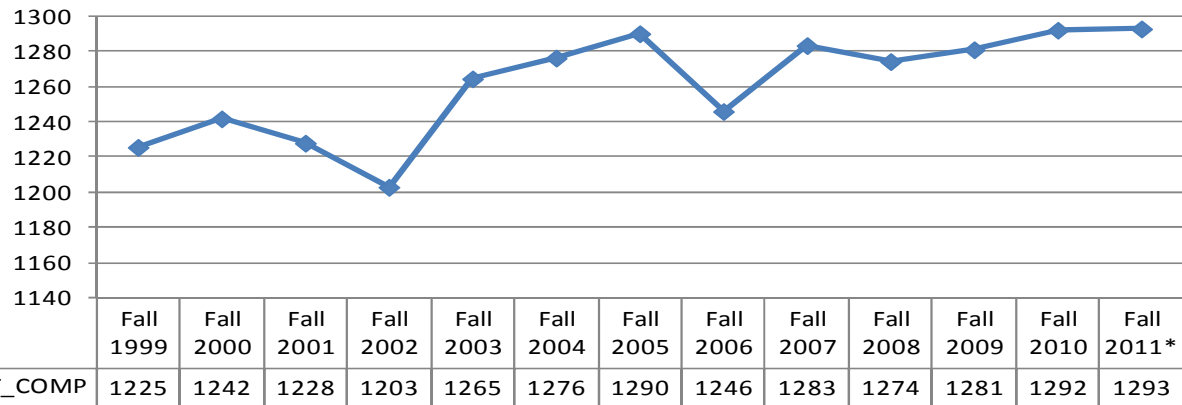
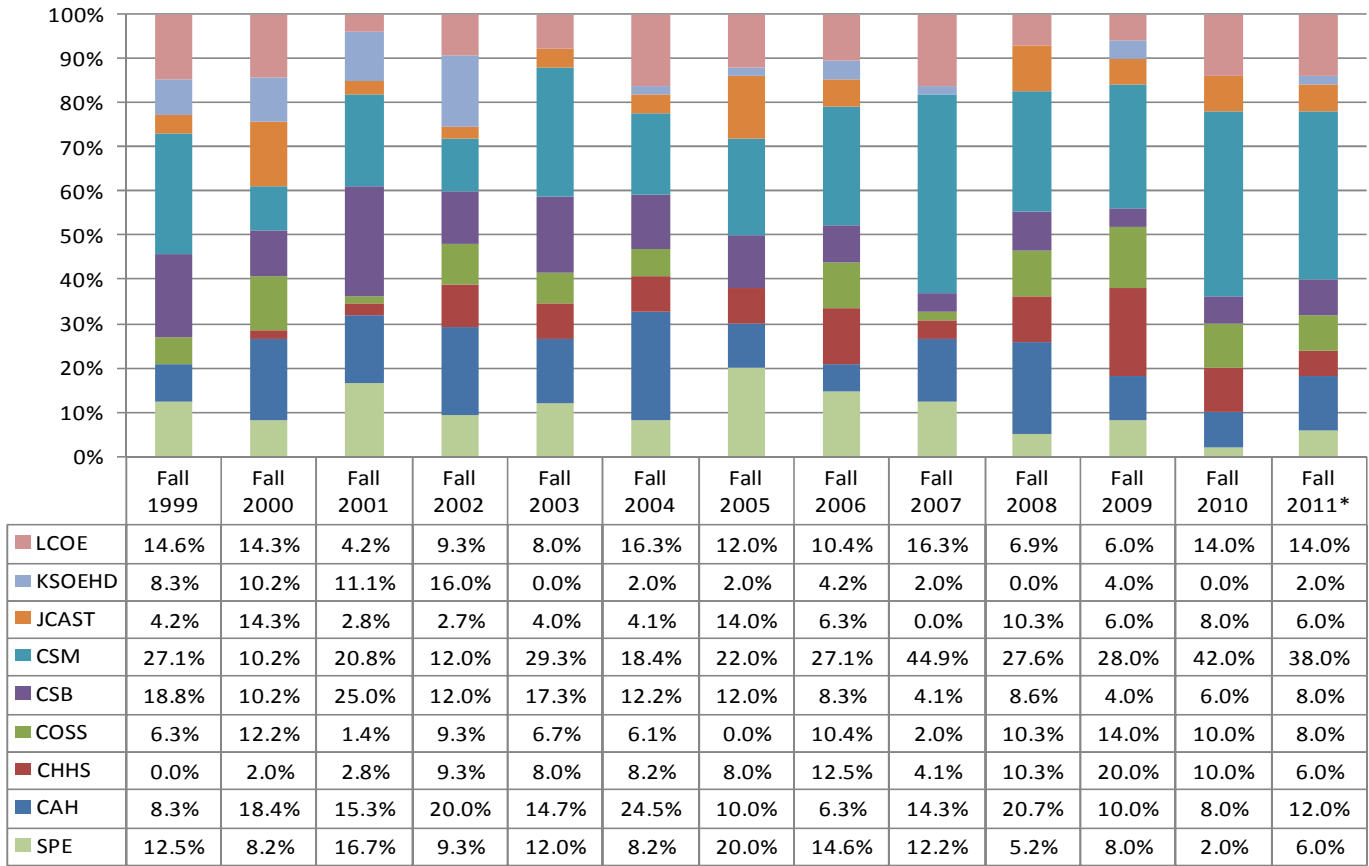


Table 9 College distribution of honor students



Descriptive statistics for honor students

	Fall 1999	Fall 2000	Fall 2001	Fall 2002	Fall 2003	Fall 2004	Fall 2005	Fall 2006	Fall 2007	Fall 2008	Fall 2009	Fall 2010	Fall 2011*
Total HC	48	49	72	75	75	49	50	48	49	58	50	50	50
Gender													
F	70.8%	61.2%	81.9%	58.7%	64.0%	57.1%	62.0%	77.1%	67.3%	65.5%	76.0%	70.0%	54.0%
M	29.2%	38.8%	18.1%	41.3%	36.0%	42.9%	38.0%	22.9%	32.7%	34.5%	24.0%	30.0%	46.0%
Ethnicity													
AMER IND		2.0%		1.3%			2.0%		4.1%				
ASIAN	14.6%	2.0%	9.7%	12.0%	12.0%	10.2%	20.0%	8.3%	12.2%	20.7%	6.0%	8.0%	14.0%
BLACK	2.1%		4.2%		1.3%	2.0%		2.1%	2.0%		2.0%	2.0%	
HISP	16.7%	12.2%	8.3%	10.7%	6.7%	14.3%	10.0%	4.2%	4.1%	6.9%	12.0%	16.0%	30.0%
WHITE	58.3%	75.5%	54.2%	65.3%	64.0%	57.1%	54.0%	70.8%	69.4%	62.1%	68.0%	62.0%	42.0%
Unknown	8.3%	8.2%	23.6%	10.7%	16.0%	16.3%	14.0%	14.6%	8.2%	10.3%	12.0%	12.0%	14.0%
Dependent family income													
> 72,000	10.4%	30.6%	22.2%	32.0%	46.7%	49.0%	36.0%	39.6%	42.9%	58.6%	58.0%	60.0%	50.0%
60,000 - 71,999	16.7%		11.1%	8.0%	17.3%	16.3%	10.0%	10.4%	14.3%	8.6%	8.0%	2.0%	6.0%
48,000 - 59,999	33.3%	8.2%	5.6%	10.7%	12.0%	4.1%	6.0%	10.4%	8.2%	8.6%	10.0%	2.0%	8.0%
36,000 - 47,999	6.3%	10.2%	12.5%	10.7%	4.0%	6.1%	8.0%	12.5%	4.1%	5.2%	2.0%	6.0%	8.0%
24,000 - 35,999	6.3%	10.2%	9.7%	6.7%	2.7%	4.1%	6.0%	6.3%	8.2%	3.4%	4.0%	2.0%	6.0%
< 24,000	4.2%	4.1%	12.5%	1.3%	1.3%	6.1%	10.0%	2.1%	4.1%	5.2%	4.0%	14.0%	6.0%
Unknown	22.9%	36.7%	26.4%	30.7%	16.0%	14.3%	24.0%	18.8%	18.4%	10.3%	14.0%	14.0%	16.0%
Parents' education (FGS refers to students whose parents didn't earn a 4-year degree)													
FGS	37.5%	32.7%	48.6%	34.7%	33.3%	24.5%	28.0%	29.2%	38.8%	24.1%	18.0%	14.0%	30.0%
CGS	52.1%	46.9%	38.9%	48.0%	62.7%	69.4%	62.0%	70.8%	59.2%	72.4%	78.0%	80.0%	66.0%
Unknown	10.4%	20.4%	12.5%	17.3%	4.0%	6.1%	10.0%		2.0%	3.4%	4.0%	6.0%	4.0%
HS GPA and SAT scores													
Avg. HS_GPA	3.93	4.00	4.06	4.08	4.09	4.15	4.12	4.15	4.21	4.18	4.21	4.22	4.24
Avg. SAT_VERB	602	613	608	597	623	641	638	623	625	629	646	640	643
Avg. SAT_MATH	623	629	620	606	641	635	652	623	659	646	636	652	649
Avg. SAT_COMP	1225	1242	1228	1203	1265	1276	1290	1246	1283	1274	1281	1292	1293
College													
CAH	8.3%	18.4%	15.3%	20.0%	14.7%	24.5%	10.0%	6.3%	14.3%	20.7%	10.0%	8.0%	12.0%
CHHS		2.0%	2.8%	9.3%	8.0%	8.2%	8.0%	12.5%	4.1%	10.3%	20.0%	10.0%	6.0%
COSS	6.3%	12.2%	1.4%	9.3%	6.7%	6.1%		10.4%	2.0%	10.3%	14.0%	10.0%	8.0%
CSB	18.8%	10.2%	25.0%	12.0%	17.3%	12.2%	12.0%	8.3%	4.1%	8.6%	4.0%	6.0%	8.0%
CSM	27.1%	10.2%	20.8%	12.0%	29.3%	18.4%	22.0%	27.1%	44.9%	27.6%	28.0%	42.0%	38.0%
JCAST	4.2%	14.3%	2.8%	2.7%	4.0%	4.1%	14.0%	6.3%		10.3%	6.0%	8.0%	6.0%
KSOEHD	8.3%	10.2%	11.1%	16.0%		2.0%	2.0%	4.2%	2.0%		4.0%		2.0%
LCOE	14.6%	14.3%	4.2%	9.3%	8.0%	16.3%	12.0%	10.4%	16.3%	6.9%	6.0%	14.0%	14.0%
SPE	12.5%	8.2%	16.7%	9.3%	12.0%	8.2%	20.0%	14.6%	12.2%	5.2%	8.0%	2.0%	6.0%

* Includes 50 students who are admitted into Honor program and registered for Fall 2011 by 06/06/2011.