

# thesis review 2009

As a culminating experience for the master's degree program, the thesis attests to the highest level of the student's academic, scholarly, and creative abilities. Each student works under the guidance of a faculty thesis chair and committee. The resulting thesis is viewed with pride as a reflection of the scholarly promise of the student and a commitment to excellence for the university. This summer and fall 2009, 59 students completed theses in areas as varied and original as the students themselves. What follows is a complete list of Summer/Fall 2009 theses by college/school and some research highlights.

## JORDAN COLLEGE OF AGRICULTURAL SCIENCES AND TECHNOLOGY

### *Animal Sciences and Agricultural Education*

**Kathleen Bell** (read [ABSTRACT](#))

Plasma Fructose, Glucose, Insulin, and Immunoglobulin G Concentrations in the 24 Hours Immediately Following Parturition When Fructose Is Used as an Energy Supplement for Neonatal Foals  
(Chair: Anne Rodiek)

◀ Kathleen Bell evaluates the effects of an oral fructose supplement on plasma glucose, fructose, insulin, and IgG concentrations on **newborn foals**.

**Tadahiro Miwa** (read [ABSTRACT](#))

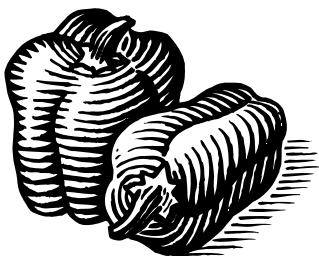
Serum and Milk Response to Lactating Cows Fed Selenium Enriched Mustard Meal  
(Chair: Jon Robison)



**Phillip Riordan** (read [ABSTRACT](#))

The Correlation of Mycotoxins with Production and Health Parameters on Central California Dairies  
(Chair: Jon Robison)

◀ Phillip Riordan seeks to help animal science professionals and dairymen better understand the relationship between different levels of molds and mycotoxins in feed and **dairy cows'** response to these levels of antigens.



Chad Jorgensen's **genetic research** focuses on regions of the pepper (*Capsicum annuum*) genome. ➤

### *Food Science and Nutrition*

**Mao Xiong** (read [ABSTRACT](#))

Affective Testing on the Seven Moles of Oaxaca  
(Chair: Dennis Ferris)

### *Plant Science*

**Chad Jorgensen** (read [ABSTRACT](#))

QTL Analysis and Marker Addition in a Recombinant Inbred Population of Pepper (*Capsicum annuum* L.)  
(Chair: James Farrar)

**Frances Rond** (read [ABSTRACT](#))  
Ethephon, Gibberellic Acid, and Kinetin's Effect on  
Guayule (*Parthenium argentatum*) Seed's Germination  
and Seedling's Development  
(Chair: Bruce Roberts)



**Loren Scheufele** (read [ABSTRACT](#))  
Factors Affecting Glyphosate Control of Horseweed  
(*Conyza canadensis*) and Hairy Fleabane (*Conyza bonariensis*)  
(Chair: Bruce Roberts)

◀Loren Scheufele seeks to determine if control of  
**Horseweed** and **Hairy Fleabane** can be  
achieved through a combination of application and  
nozzle size and type in conjunction with glyphosate.

## COLLEGE OF ARTS AND HUMANITIES

### *Art and Design*

**Phillip Johnson** (read [ABSTRACT](#))  
Images of Ifa Divination Trays: The Significance of  
Abstracted Motifs  
(Chair: Laura Meyer)

**Anna Palecek** (read [ABSTRACT](#))  
The Dialectics of Media and Design  
(Chair: A. Sameh El Kharbawy)

◀Anna Palecek studies **design-related programming** and  
magazines to determine their influence on interior design students and  
professional interior designers.



### *Communication*

**Tyffani Upton** (read [ABSTRACT](#))  
Disciplining Americans: "A" Knowledge of the War on Terrorism  
(Chair: Kevin Ayotte)



A **Depression-era** widow and mother  
searches for the power to move forward in  
Candace's Duerksen's [The Finding Jar](#). ➤

### *English*

**Candace Duerksen** (read [ABSTRACT](#)) *M.F.A.*  
The Finding Jar  
(Chair: Alex Espinoza)

**Stefani Hooper** (read [ABSTRACT](#))  
An Alchemical Analysis of Hildegard of Bingen's  
Natural Philosophy  
(Chair: Lisa Weston)

**Nicole Howell** (read [ABSTRACT](#))  
The Emancipation of Composition:  
(Re)structuring the University to Promote  
Student Success  
(Chair: Rick Hansen)

"Thus, what has been recognized as the unified and homogenous discipline  
of 'English' has become fragmented, complicated by new 'communities'  
arising on campuses and establishing new professional publications with  
**differing scholarly interests.**"

◀Nicole Howell argues for the separation of **Composition Theory**  
from the traditional English department.

**Matthew Lance** (read [ABSTRACT](#)) *M.F.A.*  
Transfers  
(Chair: Alex Espinoza)

**Courtney Miller** (read [ABSTRACT](#)) *M.F.A.*  
From the Periphery  
(Chair: Connie Hales)

**Karen Sikola** (read [ABSTRACT](#)) *M.F.A.*  
A Testament of Numbers  
(Chair: Steven Church)

**Jose Silva** (read [ABSTRACT](#))  
Critical Pedagogy at Different Latitudes  
(Chair: Rick Hansen)

**Cassie Slonaker** (read [ABSTRACT](#))  
The Use of Silence and Propriety in Jane Austen's  
Mansfield Park and Persuasion  
(Chair: Ruth Jenkins)

**Margaret Webley** (read [ABSTRACT](#)) *M.F.A.*  
The Music a Painting Makes  
(Chair: Connie Hales)

Students in the university's English Department have written 139 master's theses in the last 10 years, which ranks English as the top thesis-producing program during that time. The M.F.A. in Creative Writing is similarly productive, having written 110 collections of stories, poems, essays, or stand-alone novels over the same period.\* Many of these creative writers have gone on to publish their work in respected literary magazines and journals.

\*Data through AY 2009

*"A poem is a litany that refuses to chant, a whimpering pup that won't come when it's called."  
--M. Webley, "What Poems Are"*

## **Mass Communication and Journalism**

**Celeste Burnias** (read [ABSTRACT](#))  
Representations of Gender: News Coverage of Hillary Clinton's  
2008 Presidential Primary Campaign  
(Chair: Kelley McCoy)



## **Modern and Classical Languages and Literatures**

**Maribel Moreno** (read [ABSTRACT](#))  
Las influencias de la poesía árabe en la poesía castellana en la Península Ibérica  
(Chair: Ted Bergman)

**Avelina Sandoval** (read [ABSTRACT](#))  
Del amor al desamor: Soledad y comunidad en la poesía temprana de Pablo Neruda  
(Chair: Saúl Jiménez-Sandoval)

↳ Avelina Sandoval traces the development of **Pablo Neruda** as a poet and social activist through three books of poetry.



## CRAIG SCHOOL OF BUSINESS

**Chris Ferbrache** (read [ABSTRACT](#))

Virtual Team Leader Emergence: A Model to Objectively Measure Leader Emergence  
(Chair: Rudy Sanchez)

## LYLES COLLEGE OF ENGINEERING

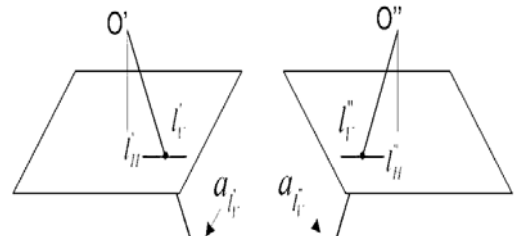
### Civil Engineering

**Jose Gomez** (read [ABSTRACT](#))

The Effects of Piping on the Shear Strength of Soils  
(Chair: Ming Xiao)

**Orrin Thomas** (read [ABSTRACT](#))

Multiview Constraint Theory for Points with Application to Bundle Adjustment and Camera Calibration  
(Chair: Riadh Munjy)

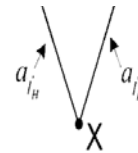


◀Orrin Thomas's ongoing investigation improves upon a gold-standard method for **3D scene reconstruction** from multiple images.

### Engineering

**Hayat Al-Sarabi** (read [ABSTRACT](#))

The Kalman Filter's Role in Identifying GPS Position and Velocity  
(Chair: Robert Hecht)



**Timothy Schellenberg** (read [ABSTRACT](#))

Wideband Printed Dipole Antenna Using a Triangular Parasitic Element  
(Chair: Robert Hecht)

## COLLEGE OF HEALTH AND HUMAN SERVICES

### Kinesiology

**Juliette Lyke** (read [ABSTRACT](#))

Effect of Arm and Leg Hair on Body Volume Measurement Using Air Displacement Plethysmography  
(Chair: Michael Coles)



### Public Health

**Maribel Fernandez** (read [ABSTRACT](#))

A Comparative Analysis of the Effects of Traditional Diabetes Care Education Versus Use of the Patient Electronic Care System (PECS) on the Knowledge, Attitudes, and Behaviors of Diabetes Patients  
(Chair: Suzanne Kotkin-Jaszi)

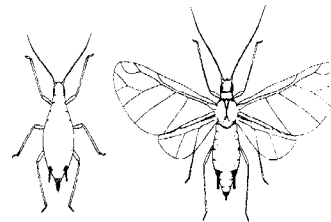
▲Maribel Fernandez used her research findings to improve **diabetes education materials** in a community health system in Fresno County, California.

## COLLEGE OF SCIENCE AND MATHEMATICS

### Biology

**Jason Furumoto** (read [ABSTRACT](#))

A Multigene Phylogenetic Reconstruction of the Green Algal Class Ulvophyceae (Chlorophyta)  
(Chair: Rick Zechman)



**Jose Gutierrez** (read [ABSTRACT](#))

Differential Feeding Behaviors of Two Distinct *Aphis gossypii* Biotypes Using the DC Electrical Penetration Graph  
(Chair: Fred Schreiber)

◀ Jose Gutierrez studies aphid feeding behaviors in an effort to mitigate transmission of costly **citrus diseases** in California and nationwide.

**Catalina Reyes** (read [ABSTRACT](#))

Effects of Erosion on the Distribution of Subtidal Communities in Elkhorn Slough, Monterey County, California  
(Chair: Michael Graham)



**Jose Soto** (read [ABSTRACT](#))

Intestinal Parasite Prevalence in Ocoroni, Sinaloa, Mexico  
(Chair: Paul Crosbie)

◀ Jose Soto analyzes the prevalence intestinal parasites in a rural Mexican community and recommends measures to **diminish parasite transmission**.

**Jennifer Talbot** (read [ABSTRACT](#))

Genetic Evidence of Permethrin Resistance in the Human Head Louse (*Pediculus humanus capitis*) from the San Joaquin Valley and San Francisco Bay Area, California  
(Chair: Paul Crosbie)

### Chemistry

**Amanda Tout** (read [ABSTRACT](#))

Bioethics of Direct-to-Consumer Genetic Tests  
(Chair: Andrew Fiala)



◀ Amanda Tout weighs the benefits of **direct-to-consumer genetic testing** against its potential repercussions.

**Donal Hodges** (read [ABSTRACT](#))

The Effects of Utilizing Video Production and Online Video Review upon Student Achievement and Motivation  
(Chair: David Frank)



**Brian Shamp** (read [ABSTRACT](#))

Identification and Quantification of Volatile Fatty Acids from a Commercial Dairy in California Using a Flux Chamber and SPME on GC/MS  
(Chair: Alam Hasson)

◀ Brian Shamp examines the specific impact that **dairy farm emissions** have on the **air quality** of the San Joaquin Valley.



## **Earth and Environmental Sciences**

**Jorge Baca** (read [ABSTRACT](#))

GIS-Aided Modeling and Site Measurement of Soil Erosion Potentials in the Upper Fresno River Watershed, California

(Chair: Zhi Wang)



## **Physics**

**Andrea Arias de Gill** (read [ABSTRACT](#))

Radiation Arising from the Rindler Gravitational Background

(Chair: Raymond Hall)

## **Psychology**

**Melanie Ciapessoni** (read [ABSTRACT](#))

Response to Intervention Level of Adoption in California: A Survey of Principals

(Chair: Marilyn Wilson)

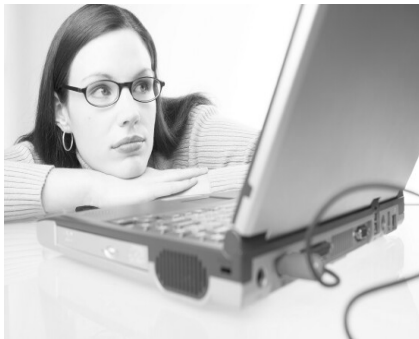


**Tessa Doty** (read [ABSTRACT](#))

Rates of Inclusion Among Students with Autistic-Like Behaviors, Mental Retardation, and Speech and Language Impairments

(Chair: Marilyn Wilson)

◀Tessa Doty addresses whether educational placements in the United States have become less restrictive for students placed in the categories of **Autistic-Like Behaviors**, Mental Retardation, and Speech Language Impairment.



**Women** make up over half the **school psychologists** in academe and 70% of the school psychology practitioners, yet remain underrepresented in research publications. Cheryl Gibson examines why. ➤

**Justin Garcia** (read [ABSTRACT](#))

Students' Perceptions of Subject Pool Participation: Coercion, Undue Influence, and Educational Value  
(Chair: Constance Jones)

**Marcel Garcia** (read [ABSTRACT](#))

Identification and Processing of Features in Simulated Dynamic Crime Scenes  
(Chair: Matthew Sharps)

**Cheryl Gibson** (read [ABSTRACT](#))

Women in School Psychology: Underrepresentation in Publication  
(Chair: Marilyn Wilson)

**Bethany Guerra** (read [ABSTRACT](#))

Using Behavioral Treatments to Improve Healthy Lifestyle Habits in School Children  
(Chair: Amanda Adams)

◀Bethany Guerra offers a school-based education program to affect change in health patterns of school children.



**Taylor Harris** (read [ABSTRACT](#))  
Transformation of Functions: Relational Frames of  
More-Than and Less-Than and the Implicit Relational  
Assessment Procedure  
(Chair: Lorin Lachs)

**Kathryn Higgins** (read [ABSTRACT](#))  
Healthy Father-Daughter Relationships, Self-Image,  
and Resilience: Associations in a Sample of College Women  
(Chair: Constance Jones)

**Debra Kusick** (read [ABSTRACT](#))  
Jumpstart Preschool Program Evaluation:  
Outcomes for Children  
(Chair: Karen Carey)



**Elizabeth Savino** (read [ABSTRACT](#))  
Placement of Sensitive and Nonsensitive Demographic  
Questions: An Empirical Study  
(Chair: Jennifer Ivie)

**Coleman Tuttle** (read [ABSTRACT](#))  
Effects of Anonymity on Aggressive Behavioral  
Responses to Anger-Provoking Driving Situations  
(Chair: Christine Edmondson)

**Tsion-Hanna Wolde** (read [ABSTRACT](#))  
The Effect of Errorless Learning Procedures on Rate of  
Skill Acquisition in Teaching Children with Autism  
(Chair: Amanda Adams)

## COLLEGE OF SOCIAL SCIENCES

### *Criminology*

**Kristiana Dixon** (read [ABSTRACT](#))  
Analysis of a State Victim Compensation Program:  
A Comparison with Child Protective Services  
(Chair: John Dussich)

◀Kristiana Dixon assesses a particular **state victim compensation program** by its achievements in soliciting child sexual abuse victims for compensation.



### *History*

**Vernon Creviston** (read [ABSTRACT](#))  
The Quebec Act: Politics, Religion, Territory, and the  
Rejection of the British Monarchy in the American  
Colonies  
(Chair: Brad Jones)

**Danielle Griffiths** (read [ABSTRACT](#))

A Community Divided: Visalia, California 1852-1940  
(Chair: Daniel Cady)

◀Danielle Griffiths analyzes the deep divisions that existed from 1852-1940 within the white community that affected the formation of Visalia's **racial ideologies**.

**Tristan Shamp** (read [ABSTRACT](#))

Nationalism, California, and the Civil War:  
The Divided Town of Visalia  
(Chair: Ethan Kytle)

**Jessica Szalay** (read [ABSTRACT](#))

World War II Newsreels: The Legacy of Yellow Journalism  
(Chair: Blain Roberts)



**Stefanie Tacata** (read [ABSTRACT](#))

Twentieth-Century Cuban Feminism and Motherhood  
(Chair: William Skuban)

**Zachary Zweigle** (read [ABSTRACT](#))

Through Adversity to the Stars: The Development of an Autonomous British Royal Air Force  
(Chair: Melissa Jordine)

### *International Relations*

**Paul Betancourt** (read [ABSTRACT](#))

Can the Swiss Model of Confederation Be Applied in Afghanistan?  
(Chair: Russ Mardon)



Paul Betancourt takes the position in his study that **confederation** is a style of government that can lower conflict, especially between people with different ethnic or religious backgrounds, and offers ways this style of government can work in **Afghanistan**.