

thesis review 2014

As a culminating experience for the master's degree program, the thesis attests to the highest level of the student's academic, scholarly, and creative abilities. Each student works under the guidance of a faculty thesis chair and committee. The resulting thesis is viewed with pride as a reflection of the scholarly promise of the student and a commitment to excellence for the university. This spring 2014 semester, 95 students completed theses in areas as varied and original as the students themselves. What follows is a complete list of spring 2014 thesis publications by college/school and some research highlights.

JORDAN COLLEGE OF AGRICULTURAL SCIENCES AND TECHNOLOGY

Food Science and Nutrition

Antonia Martinez

Show Genre Preference and the Likelihood to Watch a Nutrition Professional on Food-Related Television Programming

(Chair: Klaus Tenbergen)



Plant Science

Navreet Mahal

Nitrous Oxide Emissions from Cotton Fertilized with Urea Ammonium Nitrate

(Chair: Dave Goorahoo)

Andrew David Pokorny

A Survey of Fungicide Resistance in *Botrytis Cinerea* on Strawberries in California's Central Coast Region

(Chair: Anil Shrestha)

Jarred Richard Sturla

Using the ^{15}N Stable Isotope Natural Abundance Method to Estimate the Impact of Manure Application on Nitrogen Budgets for Alfalfa Grown in the Santa Clara and San Joaquin Valleys of California

(Chair: Bruce Roberts)



Viticulture and Enology



Brodie McCarthy

Organic Acid Profile and Ph of Cabernet Sauvignon Fruit Forced to Ripen Under Cooler Conditions in a Warm Region
(Chair: Sanliang Gu)

Xiaofan Zhao Chlorine Dioxide Sachets for the Control of Postharvest Decay of ‘Crimson Seedless’ Table Grapes and Influence of Cluster-Directed Applications With Five Potassium Salts on the Quality of ‘Sweet Scarlet’ and ‘Scarlet Royal’ Table Grapes
(Chair: Sonet van Zyl)

COLLEGE OF ARTS AND HUMANITIES

Art

Sarah Elizabeth Coker

Lapita as Culture and Tradition: Defining Lapita Pottery as Oceanic Art
(Chair: Keith Jordan)



Creative Writing—Master of Fine Arts

J.J. Anselmi

Heavy: A Memoir of Wyoming, BMX, Drugs, and Heavy Fucking Music
(Chair: John Hales)

Michael Jonathan Gray

What Falls From This Sky
(Chair: Corrinne Hales)

Rachanan Anunnub

Flying Across the Pacific
(Chair: John Hales)

Christina Ruth Hayes

We Drew Maps in the Stars
(Chair: John Hales)

Stacey Balkun

Mapparium
(Chair: Connie Hales)

Nicole Lassen

I Accidentally_____: A Collection of Essays That Fill In The Blank
(Chair: Steven Church)

Jamie Barker

Poems in the Lap of Death: Essays and Explorations
(Chair: John Hales)

Richard Aaron Margolis

Comfort in Fire
(Chair: Connie Hales)

Suren Oganessian
Odinochka
(Chair: Alex Espinoza)



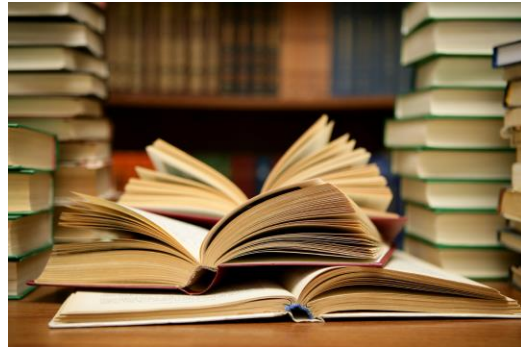
Glady Ruiz
Chasing Fish First Caught on a Mountain
Top
(Chair: Connie Hales)

English

Gilliann Mar Hensley-Sánchez
The First-Year Writing Classroom & the Digital Age: Arguments for and Methods of
Implementing Technology into Composition Curriculum
(Chair: Virginia Crisco)

Cody Michael Hoover
The Darwinian Abject: Human-Animal Ambiguities and Anxieties in Victorian Literature
(Chair: Ruth Jenkins)

Cara Ann McFadden
Agency and Spirituality in Charlotte
Brontë's *Jane Eyre*, in Anne Brontë's *The
Tenant of Wildfell Hall*, and in Emily
Brontë's *Wuthering Heights*
(Chair: Ruth Jenkins)

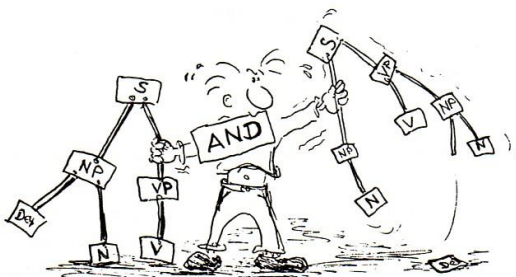


Shane Alden Wood
Theorizing Failure in Composition Studies and Writing Classrooms
(Chair: Asao B. Inoue)

Lena Zaghmouri
Writing the Borderland in Contemporary Arab American Literature
(Chair: Samina Najmi)

Linguistics

Ali Alelaiwi
Investigating What Might Determine the Quality of the Epenthetic Vowel
(Chair: Chris Golston)



Reham Alhammad
Emphasis Spread in Najdi Arabic
(Chair: Chris Golston)

Kathryn T. Gorman
11 Influence on Adult L2 Learners' Attention to
English Articles
(Chair: Brian Agbayani)

Ron Warren

An Acoustic Analysis of the Feature Advanced Tongue Root in Karajá
(Chair: Sean Fulop)

Modern and Classical Languages and Literatures

María Luz Guevara

Explotación a la naturaleza en *La Vorágine*, y en la obra cuentística de Quiroga
(Chair: Gloria Medina-Sancho)

LYLES COLLEGE OF ENGINEERING

Civil Engineering

Jong Youn Han

Efficiency of Soil Vapor Extraction (Sve) for Groundwater Remediation, Bakersfield Refinery, Kern County California
(Chair: Liu Lubo)

Nathan Miller

Mechanical Properties of Rubberized
Lightweight Aggregate Concrete
(Chair: Fariborz M. Tehrani)

Adam Soto

Investigation of Crack Propagation in Steel and
Concrete Composite Beams Using Fiber
Reinforcement
(Chair: Fariborz Tehrani)



Electrical and Computer Engineering

Laura N. Valencia Navarro

Use of Synchrophasors for Fault Area Detection and Monitoring – A New Scheme
(Chair: Nagy Bengiamin)

COLLEGE OF HEALTH AND HUMAN SERVICES

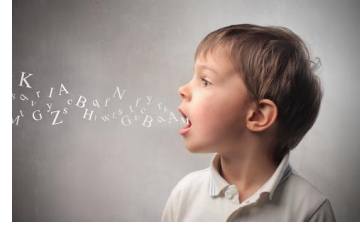
Communicative Disorders and Deaf Studies

Karina Rochelle Harris

The Efficacy of Concurrent Treatment in Improving Speech Sound Production and
Generalization In Children With Cochlear Implants
(Chair: Frances Pomaville)

Alyse Michelle Ferguson

The Efficacy of Phonemic Awareness Instruction in the Remediation of Phonological Deletion Processes in Children
(Chair: Christine Maul)



Sara Breann Snell

The Efficacy of Concurrent Treatment as a Motor-Skill Approach for Childhood Apraxia of Speech (CAS)
(Chair: Steven Skelton)

Kinesiology

Alexandra Marie Clifton

Resources Available to Assist Collegiate Student-Athletes in Their Transition Out Of Competitive Sport
(Chair: Jenelle Gilbert)



Katherine Grace Contrestano

Athletic Identity, Team Role, and Reasons for Continued Sport Involvement of High School Varsity Team Sport Athletes
(Chair: Jenelle Gilbert)

Kurt Anthony Escobar

The Effect of Carbohydrate Intake on Crossfit Performance and Associated Metabolic/ Physiological Demands and Responses
(Chair: Jacobo Morales)

Christopher Joseph Jamero

Isokinetic Comparison of Collegiate Baseball Players with and without Glenohumeral Internal Rotation Deficit
(Chair: Tim Anderson)

Hayden Lyon

The Effects of Moderate to Vigorous Intensity Exercise on Concentration
(Chair: Dawn Lewis)

Inge Milius

Profile and Meaning of P-Touch in Collegiate Women's Basketball: a Case Study
(Chair: Wade Gilbert)

Christina M. C. Monreal

A Case Study on the Effect of Sport Psychology Consulting on Adherence to Rehabilitation, Pain Phenomenon, and Overall Satisfaction with Rehabilitation)
(Chair: Dawn Lewis)

Samantha Jo Strauch

Comparing Fall Risk of Older Adults in a Community-Based Fitness Program to Non-Participants
(Chair: Catherine G.R. Jackson)

Nursing

Holly Marie Miller

Incidence and Prevalence of Type 1 Diabetes in the Central Valley of California: 2005-2013

(Chair: Mary Barakzai)

Oliver Kampitan Olaivar

Transcultural Self-Efficacy Perceptions of Nurse Practitioners in Fresno, California

(Chair: F. Ndidi U. Griffin)



Sabrina Sanchez

Critical Thinking and the Utilization of Nontraditional Instructional Methodologies

(Chair: Ndidi Griffin)

Public Health

Michelle Alcantara

Determining the Differences in Cigarette Smoking Patterns Between College Students with Disabilities and College Students Without Disabilities

(Chair: Vickie Krenz)

Meron Shita

College Students' Sexual Practices and Contraception Use: Exploring Differences Based on Gender, Ethnicity, and Age

(Chair: Vickie Krenz)

Ashley Marie White

Differences in Fruit and Vegetable Consumption and Exercise Among a Sample of Students at a Public California State University Campus

(Chair: Kara Zografos)



Social Work Education

Regina Elizabeth Bates

An Exploratory Study of the Experiences of Young Adults with Bipolar Disorder

(Chair: Kris Clarke)

Cynthia Kay Farley

Overcoming Death Anxiety: a Strength Based Approach to Possibility And Personal Growth

(Chair: Kris Clarke)

Angela Gerow

The Unsung Heroes Behind Every Soldier

(Chair: Kris Clarke)

Rosa Hernandez

Underutilization of Mental Health Services by the Latino Population: The Role of Spirituality and Religious Practices
(Chair: Donna Hardina)



Kara Nile Linkowski

A Narrative Study Exploring the Coping Processes of Siblings of Individuals with Down Syndrome
(Chair: Kristi Clarke)

Stevee Lopez

Contributing Factors in the Development of Relational Aggression in Female Adolescents
(Chair: Donna Hardina)

Veronica Lua

Developing an Understanding of the Sources and Barriers to Sex Education from a Hispanic/Latino Male Perspective
(Chair: Donna Hardina)

Nadine Nickole Mejia

Army National Guard Female Veterans' Experiences While Deployed
(Chair: Martha Vungkhanching)

KREMEN SCHOOL OF EDUCATION AND HUMAN DEVELOPMENT

Counseling, Special Education, and Rehabilitation

Lindsey Beth Nielsen

Special Education and Related Services Referral and Teacher Bias
(Chair: Colleen Torgerson)



Educational Research and Administration

Brenda Sifuentez

Cultural Competency: An Understanding of Cultural Competency Within the Division of Student Affairs at Fresno State
(Chair: Susana Hernández)

Teaching

David Pretre

Narrowing Korean Socioeconomic Achievement Gaps through Parental Support
(Chair: Jason Immekus)

COLLEGE OF SCIENCE AND MATHEMATICS

Biology



Pierre Boivin

Using New Genomic Data in Chile Peppers, *Capsicum Annuum*, to Discover Molecular Anchor Markers for the Analysis of Genes of Horticultural Interest
(Chair: John V.H. Constable)

Cynthia Marie Contreras

Cytotoxic Mechanisms of Zoledronic Acid in Osteotropic Breast Cancer Cells
(Chair: Jason Bush)

Darshanpreet Gill

Identifying Molecular Markers Associated with Salt and Boron Tolerance in Poplar Trees
(Chair: Brian Tsukimura)

Monica Lizeth Gonzalez Ramirez

Developing a System to Investigate the Role of Caspase-8/FLIP_L as Proliferative Partners
(Chair: Jason Bush)

Walter Kyle Griffiths

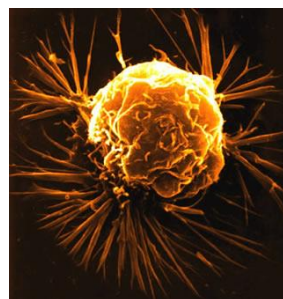
Piscivory in an Altered Environment of the San Joaquin River, California
(Chair: Steve Blumenshine)

Max Kutsenkow Henning

Seasonal Variation in Phenolic Profiles of a Peach X Almond Hybrid F₂ Generation
(Chair: John V.H. Constable)

Malika Kaur Sahini

Metabolomic Analysis of Her2-Positive Breast Cancer Cells
(Chair: Jason A. Bush)



Chemistry

Jaime Ross Green

Examination of Isoprene Chemistry Under Varied Atmospheric Radical Concentration
(Chair: Alam Hasson)

Truc Duy Thanh Le

Synthesis and Characterization of Isoprene Hydroxy Nitrates

(Chair: Santanu Maitra)

Srikar Reddy Middala

Emissions and Atmospheric Chemistry of Selected Agricultural Pollutants

(Chair: Alam Hasson)

Swetha Satyanarayana Reddi

Effect of Neurotoxin BMAA on Proteolytic Processing of APP in Cellular Model Systems

(Chair: Santanu Maitra)

Nataly Santiago

Fluorescence Energy Transfer from Laser Dye to Gold Nanoparticles

(Chair: Jai-Pil Choi)



Physics

Emmanuel Angulo

Experimental Study of Gaseous Chambers for the Atlas Muon Sub-Detector Upgrade R&D

(Chair: Yongsheng Gao)

Mathematics

Megan Kuneli

Spreads and Parallelisms

(Chair: Oscar Vega)

$$\Lambda_{D_+}^*(\alpha, x) - \Lambda_{D_-}^*(\alpha, x) = x(\Lambda_{D_0}^*(\alpha, x) - \Lambda_{D_\infty}^*(\alpha, x))$$

Katherine Urabe

The Dubrovnik Polynomial of Rational Knots

(Chair: Carmen Caprau)

Karen Willis

Blocking Polygons in Finite Projective Planes

(Chair: Oscar Vega)

Psychology

Paneet Badhesha

Demographics, Roles, and Job Satisfaction of California School Psychologists

(Chair: Marilyn Wilson)

Allie Baldwin

Time Perception in Adults with and without Autism Spectrum Disorder: The Effects of Feedback on Performance During a Time Production Task

(Chair: Marianne Jackson)

Michael Garza

A Taxonomy of Human Intersexual Flirtation

(Chair: Michael Botwin)



Sarrah Lynn Hubble

Parent and Teacher Opinions on the Importance of Parental Involvement to Academic Achievement

(Chair: Marilyn Wilson)

Ashley McCaffery

Teachers' Perceptions of Low-Socioeconomic Status Students' School-Related Behavior and Characteristics

(Chair: Hong Ni)

Ana-Alicia Rodriguez

Parental Expectations of Social and Emotional Development in Early Childhood Education: A Comparison Between Hispanic and White Parents

(Chair: Hong Ni)

Laura Nereyda Sánchez

Expectations Among Latino Parents: Socioeconomic Status, Acculturation, and Child Gender as Predictors of Home and Academic Expectations

(Chair: Marilyn Wilson)

Kara Allison Sidorowicz

The Effects of Choice on Memory

(Chair: Karl Oswald)

Meghan Marie Stanley

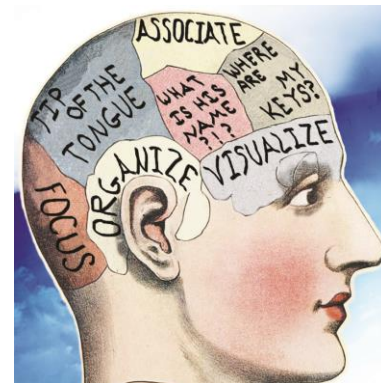
An Examination of Larry P. and Special Education in California

(Chair: Marilyn Wilson)

Martha Stout-Richardson

The Desirability Bias in Competitive Situations: The Role of Focalism

(Chair: Paul C. Price)



School Psychology (Ed.S.)

Sadie Neri

Read Naturally Versus Phonics for Reading: Utilization and Effectiveness

(Chair: Marilyn Wilson)

Emily Winden

Modifying Juvenile Delinquents' Negative Behaviors: The Effectiveness of Reward and Response Cost Models in a Group Home

(Chair: Marilyn Wilson)

COLLEGE OF SOCIAL SCIENCES

Criminology

Victor Wang

Illegal Firearms, Violent Crime, and Neighborhood
Inequality in Fresno, California

(Chair: *George Kikuchi*)



History

Stephen Muir Bohigian

“Good Housing a Dream”: Residential Segregation and the African American Community in
West Fresno, California, 1868-1972

(Chair: *Daniel Cady*)

Dalia Haitayan

Urban Exodus: The Allure of Suburbia and the Transformation of Fresno’s Protestant Churches

(Chair: *Daniel Cady*)

Ian Christopher Holmes

“Rekindle the True Spirit of Patriotism”:
The People, The Press, and The Siege of
Charleston, 1780

(Chair: *Bradley Jones*)



Hagop Ohanessian

The Armenian Relief Society (ARS):
A Case Study of Armenian-American Women in
the Twentieth Century

(Chair: *Jill Fields*)

Michael John Owens Jr.

The Best of Both Worlds: American–Soviet Cooperation During the Space Race

(Chair: *Lori Clune*)

Samantha Peel

Political Identities and the Contest for Public Space in Revolutionary New York City

(Chair: *Bradley Jones*)

Tony Petersen

A Breakable Bond: How the Meaning of Virtue Tore Apart a Friendship and an Empire

(Chair: *Bradley Jones*)