

thesis review 2005

As a culminating experience for the master's degree program, the thesis attests to the highest level of the student's academic, scholarly, and creative abilities. Each student works under the guidance of a faculty thesis chair and committee. The resulting thesis is viewed with pride as a reflection of the scholarly promise of the student and commitment to excellence for the university. This semester, 29 students completed theses in areas as varied and original as the students themselves. What follows is a complete list of Fall 2005 theses by college/school and some research highlights.

COLLEGE OF AGRICULTURAL SCIENCES AND TECHNOLOGY

Food and Nutritional Sciences

Carey Davies (read [ABSTRACT](#))

The Knowledge and Practices of California Registered Dietitians Regarding Herbal Supplements
Sandra Witte (Chair)



Christie Tayar (read [ABSTRACT](#))

Feeding Burn Patients via a Gastric Tube up Until Surgery to Enhance Caloric and Protein Intake

Sandra Witte (Chair)

Christie Tayar found that tube feeding burn patients until the time of surgery is a safe way to improve the patient's nutritional status, help heal wounds, decrease metabolic rate, and increase overall survival.

Janani Tulasendrapuram (read [ABSTRACT](#))

The Efficacy of Gaseous Ozone for the Control of *Trichoderma* in Trays Used for Mushroom Growing

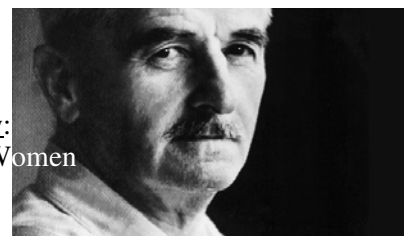
Erin Dormedy (Chair)

COLLEGE OF ARTS AND HUMANITIES

English

Gail Gelegan (read [ABSTRACT](#))

Epicenity and Impotence in William Faulkner's Soldiers' Pay: Male Disempowerment Through Ambivalent Androgynous Women
Chris Henson (Chair)



Teresa Keoppel (read [ABSTRACT](#))

Identity Wars: Postmodern Versus Modern in Paul Auster's The New York Trilogy
Rick Hansen (Chair)

Kimberly Sheffield (read [ABSTRACT](#))

Myths and Madness: Mother-Daughter Relationships in Maxine Hong Kingston's The Woman Warrior and Mary Karr's The Liar's Club

Linnea Alexander (Chair)

Mass Communication and Journalism

Monmi Buragohain (read [ABSTRACT](#))

Studying Media and Terrorism: An Analysis of Mass Communication Literature from 1970 Through 2005

Tommy Miller (Chair)

Inga Lukaviciute (read [ABSTRACT](#))

Content Analysis of Political TV Advertising Spots in the 2004 Presidential Election

Tamyra Pierce (Chair)



COLLEGE OF ENGINEERING

Civil Engineering

Darion Grant (read [ABSTRACT](#))

LIDAR Strip Adjustment with TIN Matching

Riadh Munjy (Chair)

Interdisciplinary Studies

Peter Schmidt (read [ABSTRACT](#))

Learner Centered Technology

Brent Auernheimer (Chair)



Peter Schmidt tested a system to collect empirical data regarding student comfort level with the use of video tutorial modules; he plans to use the data to adapt video tutorials to be more learner-centered. Similar to traditional learning, the goal is for students to mold the material to better meet their learning needs.

COLLEGE OF HEALTH AND HUMAN SERVICES

Communicative Disorders and Deaf Studies

Judy Price (read [ABSTRACT](#))

An Experimental Comparison of Concurrent and Incremental Task Sequencing for the Treatment of Single Speech-Sound Errors in Children

Steven Skelton (Chair)

Kinesiology

Sarah McCord (read [ABSTRACT](#))

School-Based Healthy Activities Program for Exercise

Wade Gilbert (Chair)



Judy Price concluded in her thesis that concurrent treatment, which uses a variable randomized practice, may be more effective and more efficient than traditional incremental treatment and may lead to quicker and better learning in children needing treatment for single speech-sound errors.

Gary Rodriguez (read [ABSTRACT](#))
Muscle Fiber Type Estimation in an Isotonic
Leg Extension Test
Tim Anderson (Chair)

Kelly Wilson (read [ABSTRACT](#))
National Collegiate Athletic Association Division I Athletic
Directors' Attitudes Toward Sport Psychology Consulting
Jenelle Gilbert (Chair)

“Sport psychology consultants and organizations committed to improving the job market for applied sport psychology must continue to develop outreach programs aimed at the administrative level of sport to further educate these decision makers about how sport psychology consultants can improve the experience of student-athletes.” (Wilson, p. 53)

Nursing

Jacqueline Gregory (read [ABSTRACT](#))
The Effects of Gender on the Reporting of Symptoms, the Accessing of Medical Care, and the Applicability of the Rome II Criteria Among Hispanics with Irritable Bowel Syndrome
Mary Barakzai (Chair)

Public Health

Janet Gardner (read [ABSTRACT](#))
Radiological Levels in the Hard Rock Drinking Water
Wells of Eastern Madera County, California
Sandra Donohue (Chair)

Janet Gardner's thesis presents the drinking water concerns relative to eastern Madera County. Her work benefits future land use and development efforts by helping identify water resources available so the county can match this with the population to be served and plan for future growth within these communities



Vince Jenkins (read [ABSTRACT](#))
Prevalence of Tobacco Use Among the 18-To 24-Year-Old
Student Population at California State University, Fresno
Vickie Krenz (Chair)

Jeffrey Toomer (read [ABSTRACT](#))
Incidences of Elder Abuse in Domestic Settings Among
Different Ethnic Groups
Helda Pinzon-Perez (Chair)

KREMEN SCHOOL OF EDUCATION AND HUMAN DEVELOPMENT

Literacy and Early Education

Loretta Rodriguez (read [ABSTRACT](#))
A Comparison of Two Literacy Interventions and a
Remedial Reading Program for Intermediate Level
Students
Judith Chibante Neal (Chair)

Loretta Rodriguez presents ideas on how to best meet the literacy needs of struggling readers beyond the primary grades.



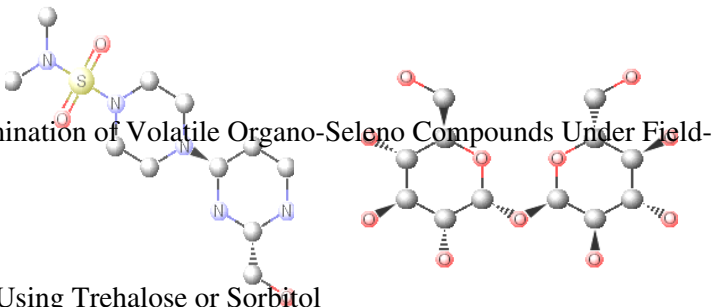
COLLEGE OF SCIENCE AND MATHEMATICS

Chemistry

Irvin Arroyo (read [ABSTRACT](#))

Developing a System for the Determination of Volatile Organo-Seleno Compounds Under Field-Like Conditions

Barry Gump (Chair)



Alicia Moe (read [ABSTRACT](#))

Stabilizing Forensic DNA Samples Using Trehalose or Sorbitol

Sulekha Coticone (Chair)

Geology

Jason Olin (read [ABSTRACT](#))

Stream Character, Aquatic Habitat, and Restoration Plan for Big Meadows Creek, Sequoia National Forest, Tulare County, California

Roland Brady (Chair)



Jason Olin designed a plan to restore degraded reaches of Big Meadows Creek and to enhance the aquatic/terrestrial habitat and fishery while maintaining existing land use such as grazing and recreation.

Ray Tugman (read [ABSTRACT](#))

The Structure and Tectonics of Rabbit Hill, Madera County, California

Roland Brady (Chair)



Marine Science

Daniele Ardizzone (read [ABSTRACT](#))

Application of the Bomb Radiocarbon Method to Shortfin Mako (*Isurus oxyrinchus*) Age Validation

Gregor M. Cailliet (Chair)

Psychology

Jennifer Benedict (read [ABSTRACT](#))

The Concurrent Validity of the Early Screening Project (ESP) with the Child Behavior Checklist Teacher Report Form (CBCL-TRF)

Karen Carey (Chair)

Laura Browning (read [ABSTRACT](#))

A Follow-Up Analysis of Social Skills Training

Marilyn Wilson (Chair)

Jill Hernandez (read [ABSTRACT](#))

An Evaluation of the Footsteps Program: The Effectiveness of Art and Group Therapy for Children Who Have Experienced a Significant Loss

Marilyn Wilson (Chair)



COLLEGE OF SOCIAL SCIENCES

Criminology

Daniel Grigg (read [ABSTRACT](#))

Testing the *Time/Distance Assumption*: A Spatial Analysis of 11 Localized Geographically Stable U.S. Serial Murderers
Eric Hickey (Chair)

Daniel Grigg sought to determine the validity of the Time/Distance Assumption, the idea that each subsequent crime a serial offender commits will be further away from his/her home base.

International Relations

Roberto Gonzalez (read [ABSTRACT](#))

Demographics and Challenges for Public Policy in The European Union
Russell Mardon (Chair)

Decreasing fertility rates and aging societies in most of the industrialized nations, along with increased longevity and healthcare costs, have led to a “demographic tsunami” in the European Union. In his thesis, Roberto Gonzalez analyzes the reform efforts EU nations have undertaken in response to the changing times.



The *Thesis Review* is a regular electronic publication of the Thesis Office in the Division of Graduate Studies at California State University, Fresno. This document is intended to identify and categorize our graduate students' areas of study, provide access to thesis abstracts, and generally increase the visibility of graduate education at CSU, Fresno. All questions pertaining to this document should be addressed to the university's thesis consultant: (559)-278-2448.